



JUNE 10, 2018

ORDER OF SERVICES

SUNDAY

8am Worship
9:45am Bible Study
11am Worship
5pm Worship

TUESDAY

10am Bible Study

WEDNESDAY

7pm Bible Study

CHURCH EVENTS

TODAY

- June 10**
2 p.m. - 4:30 p.m.
GENNY MOORE'S 50TH BIRTHDAY CELEBRATION
Contact: [Tyson Moore](#) | Come share this special occasion with the Moore's at Crenshaw Church of Christ
- June 10**
1:00 p.m.
NORMANDIE CHRISTIAN SCHOOL LUNCHEON
Contact: [Ernieca Burnett](#) for tickets | Foundation Center at 11633 S. Western Avenue, LA, CA 90047

THIS WEEK

- June 16**
FATHER'S DAY CELEBRATION
Contact: [Genny Moore](#) or [Monyca Brown](#)
Last chance for dads to sign up on the sheet attached to the clipboard in the foyer at the front of the building.

COMING SOON

- June 24**
WORSHIP ON THE MOUNT
Contact: [Daryl Burnett](#)
Six Flags Magic Mountain.
Tickets are \$40.
- June 30**
11 a.m.
SENIOR MOVIE EVENT Contact: [Regina Bryant](#)
Everyone is invited to this movie viewing event with lots of food, fellowship and fun! Meet us in **the Annex**.
- July 21**
11 a.m. - 4 p.m.
CRENSHAW COC COUNTRY WESTERN COOKOUT
Kenneth Hahn State Park



The best is yet to come!

THE 50th BIRTHDAY Celebration!
IN HONOR OF GENNY MOORE

JUNE 10 2-4:30PM
COMPLIMENTARY DESSERTS TO FOLLOW
ALL AGES WELCOME - GIFTS APPRECIATED

Featuring
PRAISE & WORSHIP - POETRY
EXPRESSIONS OF LOVE & MORE
w/ Special Guests

Come share this special occasion with us
at **CRENSHAW CHURCH OF CHRIST**
2719 W. MARTIN LUTHER KING, JR. BLVD
LOS ANGELES, CA 90008

you are **WANTED** at the
Crenshaw Church of Christ
COUNTRY WESTERN COOKOUT

Kenneth Hahn State Park
Saturday, July 21, 2018
11:00 AM - 4:00 PM

BRING YOUR APPETITE! (ALL INVITED)

FOOD FRIENDS & FAMILY FUN
Location: 4100 La Cienega Blvd.,
LA, CA 90056 | Sun Valley Area

Parking Admission: \$6
Lunch served at 12pm
Lawn chairs optional!

\$15
CD or Digital
See Daryl for more info.

Acappella Music
"Way To Go"
a spiritual journey
by Daryl M. Burnett

UCW's Outreach Ministry 2018 is underway. The goal is 500 Items such as toiletries, toothpaste, deodorant, underwear, etc. There are bins in the in the foyer and back entry ready for your donation. See [Ruby Morgan](#) and [Valerie Duplessis](#) with any questions.

ATTITUDE IS EVERYTHING

An attitude can murder just as easily as an ax.
-Woodrow Kroll

Services Offered

- Emergency Shelter
- Free Cell Phone
- Veteran Services
- Mental Health Services for Adults and Teens
- Medi-Cal/ CalFresh Enrollment
- CES Housing Assessment
- Child Support Services □ Referrals and Resources

Every Third Tuesday

12:30 – 3:30 p.m.

- March 20, 2018
- April 17, 2018
- May 15, 2017
- June 19, 2017
- July 17, 2018
- August 21, 2018

The SOURCE

AT EXPOSITION PARK REGIONAL BRANCH

Free Health & Emergency Shelter Services

Every third Tuesday of the month
12:30 p.m. - 3:30 p.m.

The Source is a convenient one-stop shop of services and resources for community members experiencing homelessness, those at risk of losing their homes, or who are low-income.

Refreshments will be served.

Exposition Park Library
3900 S. Western Ave.
Los Angeles, CA 90062

Questions about this event?

Contact – Sandra Brooks at (323) 290-3113

For ADA accommodations, call 213.228.7430 at least 72 hours prior to event.



LOS ANGELES PUBLIC LIBRARY



SAVE THE DATE

V.I.P.

VOICES IN PRAISE

featuring

INFUSION

Crenshaw Church of Christ

July 14, 2018

5:00pm



United Christian Women
of the Churches of Christ

30TH ANNUAL *Seminar*

OCT 5TH-7TH 2018

Deborah Houston
Keynote Speaker



Sunday Worship Speakers

Sunday Worship Song Leaders



Tyson Moore
Minister
Crenshaw Church of Christ



Stan Harmon
Minister
Hawthorne Church of Christ



Darryl Burnett
Music Director & Artist
Crenshaw Church of Christ



Darron Jones
Minister of Music
Metropolitan Church of Christ

Saturday night banquet theme:

“The Royal Priesthood”

Kings & Queens

“It’s going to
be a Reunion”

“Reunite with old
UCW friends”

Get your royal crowns/tiaras ready!



Registration: \$150

Sheraton Gateway Los Angeles ~ 6101 West Century Blvd ~ Los Angeles, CA 90045

Registration Chairpersons:
Sherriel Myles 310.780.2910
Wendy Greene

2018 General Coordinators:
Earlene Bryson 661.252.1633
Darlene Williams 323.422.3263

you are **WANTED** at the

Crenshaw Church of Christ

COUNTRY WESTERN

COOKOUT

Kenneth Hahn State Park

Saturday, July 21, 2018

11:00 AM – 4:00 PM

BRING YOUR APPETITE! (ALL INVITED)

FOOD, FRIENDS & FAMILY FUN!

Location: 4100 La Cienega Blvd, L.A., CA 90056

Sun Valley Area



Parking Admission: \$6.00

Lunch served at 12:00

Lawn chairs are optional

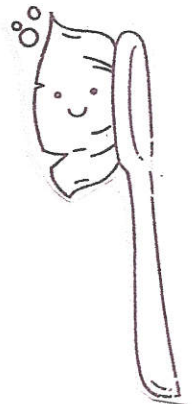
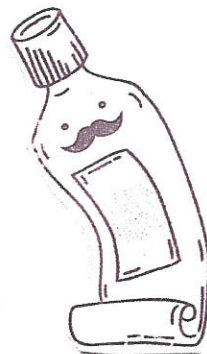
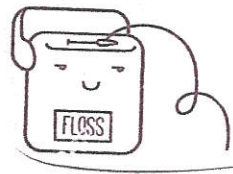
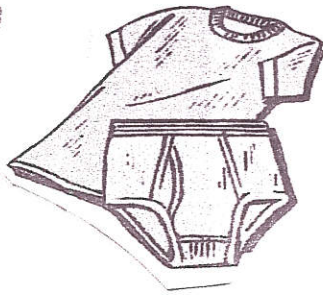
United Christian Women Churches of Christ

"Outreach Ministry 2018"

Donations Needed

Ann Douglas Shelter

Our goal is **500** Items

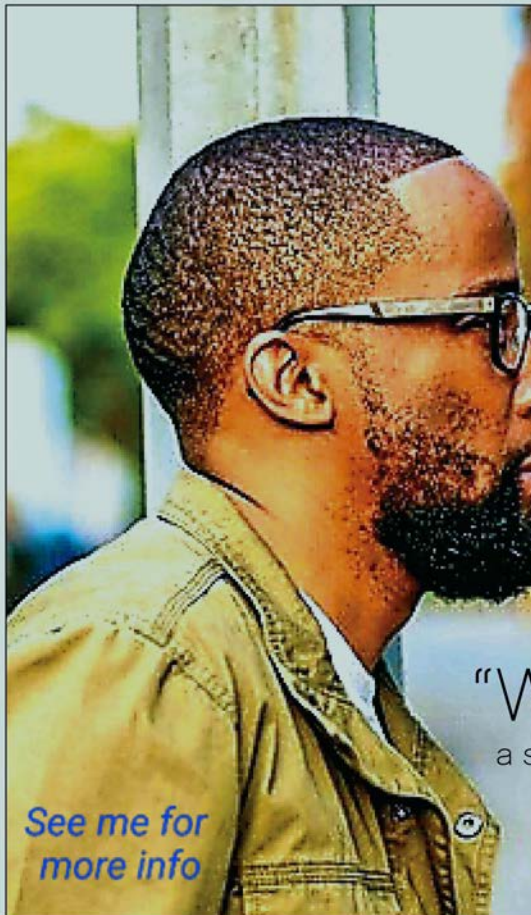


Men, Women and Children underwear in original
package only (all sizes)

Toiletries, toothpaste, toothbrush, mouthwash,
floss, lotion and deodorant

Donations can be dropped off in the bin located in
the front and back Church Foyer

Thank you and God Bless You



- 1. Here I Am
Daryl M. Burnett
- 2. Way To Go
Daryl M. Burnett
- 3. Clean Heart
Daryl M. Burnett
- 4. Blaming
Daryl M. Burnett
- 5. My Only Hope
Daryl M. Burnett
- 6. Why
Daryl M. Burnett
- 7. Faith
Daryl M. Burnett
- 8. Can You Hold It From
Daryl M. Burnett
- 9. He Not One
Daryl M. Burnett
- 10. Love Won't Go
Daryl M. Burnett
- 11. Come
Daryl M. Burnett
- 12. Vocal Elevator
Daryl M. Burnett
- 13. Somewhere
Daryl M. Burnett
- 14. God Is Here
Daryl M. Burnett
- 15. Devil Going Down
Daryl M. Burnett
- 16. One
Daryl M. Burnett
- 17. Looking Back
Daryl M. Burnett
- 18. Don't Be Afraid
Daryl M. Burnett
- 19. Radio
Daryl M. Burnett
- 20. Redeemed
& Blessed
Daryl M. Burnett
- 21. Remender
Daryl M. Burnett
- 22. The Invitation
Daryl M. Burnett
- 23. Aish
Daryl M. Burnett

**Available
Now!**

Acopella Muric
"Way To Go"
 a spiritual journey

by Daryl M. Burnett

See me for
more info

**\$15 CD or
Digital**

Next stop: more rail.

CRENSHAW/LAX TRANSIT PROJECT Crenshaw BI Station Area Restoration Closures



WHAT TO EXPECT

Restoration of Crenshaw BI in three phases, scheduled to begin in June 2018



One Gateway Plaza
99-13-1
Los Angeles, CA 90012

Metro



Crenshaw Bl Restoration: What You Need to Know

What is restoration?

The Crenshaw/ LAX Transit Project has been actively under construction along Crenshaw Bl since January 2014. Over the past few years, major milestones have been achieved in tunnel completion and station excavation. As the Crenshaw/LAX Transit Project gets closer to opening day, fall of 2019, a final phase is necessary to restore the road over the three underground stations along Crenshaw Bl.

Restoration will require the removal of the concrete panels lining Crenshaw Bl over each station box. Utilities currently hanging from beams will have to be permanently secured before the road sections are backfilled. Once temporary supports are removed and backfill is complete, the road will be repaved. The last phase of the restoration process will entail reconstruction of curbs, gutters, sidewalks and ADA ramps.

When will restoration occur?

The restoration of Crenshaw Bl is anticipated to begin in June 2018. Each phase of restoration will be implemented immediately following the other.

Where will restoration occur?

Restoration will begin at the three underground station areas along Crenshaw Bl. Work at each station will be performed separately as three phases in progression from south to north.

The first phase will implement a closure at the Leimert Park Station area and the at-grade transition section. This phase will require a closure of Crenshaw Bl from 48th St to 43rd St/Homeland Dr. The closure for the first phase will last 43 days.

The second phase will implement a closure at the Martin Luther King Jr. Station area. This phase will require a full closure of Crenshaw Bl from Stocker St to Martin Luther King Jr. Bl. The closure for the second phase will last 23 days.

The third phase will implement a closure at the Expo/Crenshaw Station area. This phase will require a full closure of Crenshaw Bl from Coliseum St to Exposition Bl. The closure for the third phase will last 37 days.

WORK ALONG CRENSHAW BL IN THREE PHASES SCHEDULED TO BEGIN IN JUNE 2018

Phase 1: Leimert Park Station Restoration

- > 48th St to 43rd St/Homeland Dr
- > 43-day closure

Phase 2: Martin Luther King Station Restoration

- > Stocker St to Martin Luther King Jr. Bl
- > 23-day closure

Phase 3: Expo/Crenshaw Station Restoration

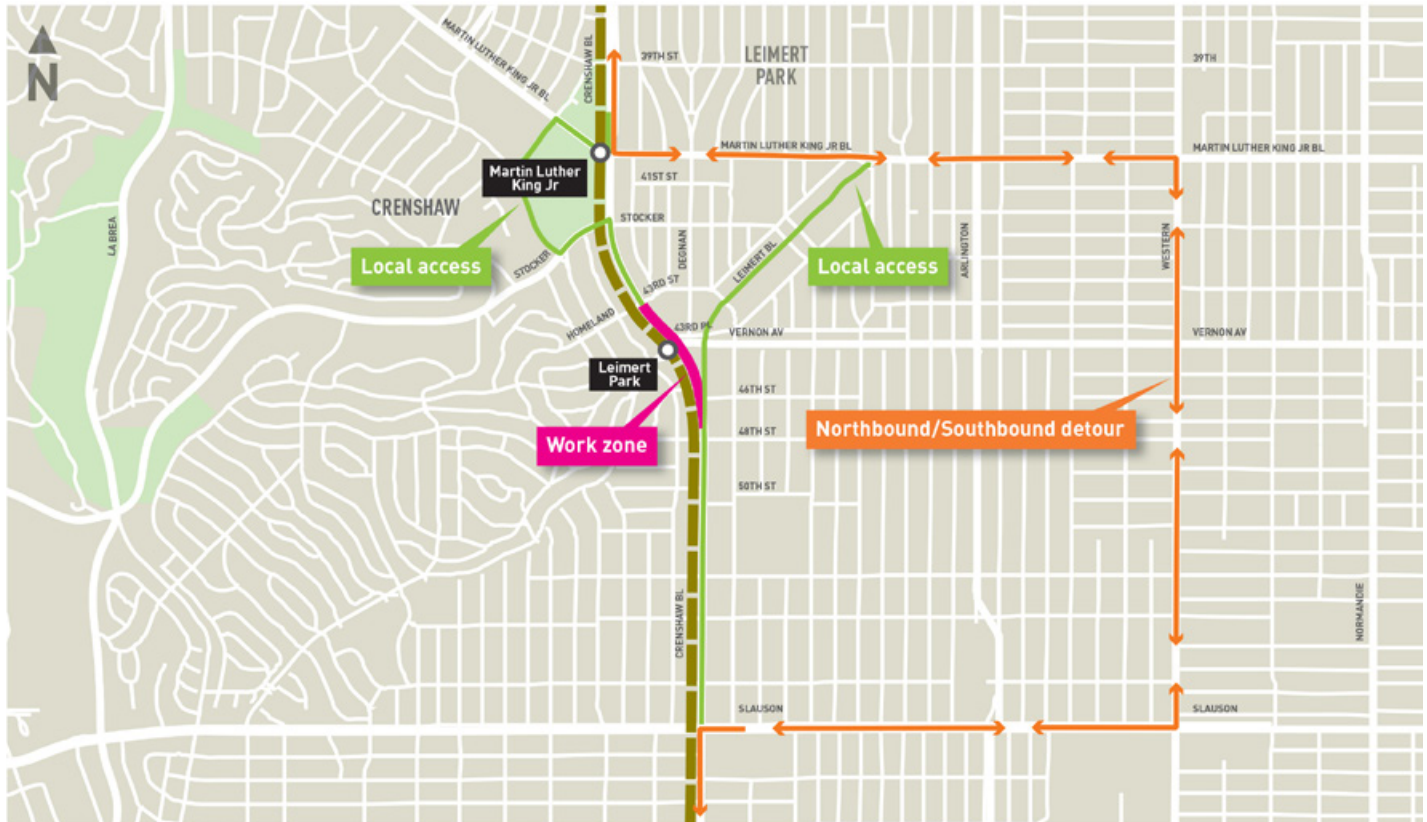
- > Coliseum St to Exposition Bl
- > 37-day closure

As part of the restoration closure operation, Traffic Control Officers (TCO) will be deployed at critical intersections to safely manage traffic conditions along the detour and alternate local access routes.

For information about taking Metro buses or trains, please call 323.GO.METRO (323.466.3876).

For information about bus and traffic detours, please visit metro.net/crenshaw.

PHASE 1: LEIMERT PARK STATION RESTORATION – MID-JUNE TO LATE JULY



ESSENTIALS

- > During the first phase, a full closure of Crenshaw Bl will be implemented from 48th St to 43rd St/Homeland Dr.
- > The closure for restoration of the Leimert Park Station is scheduled to last 43 days.

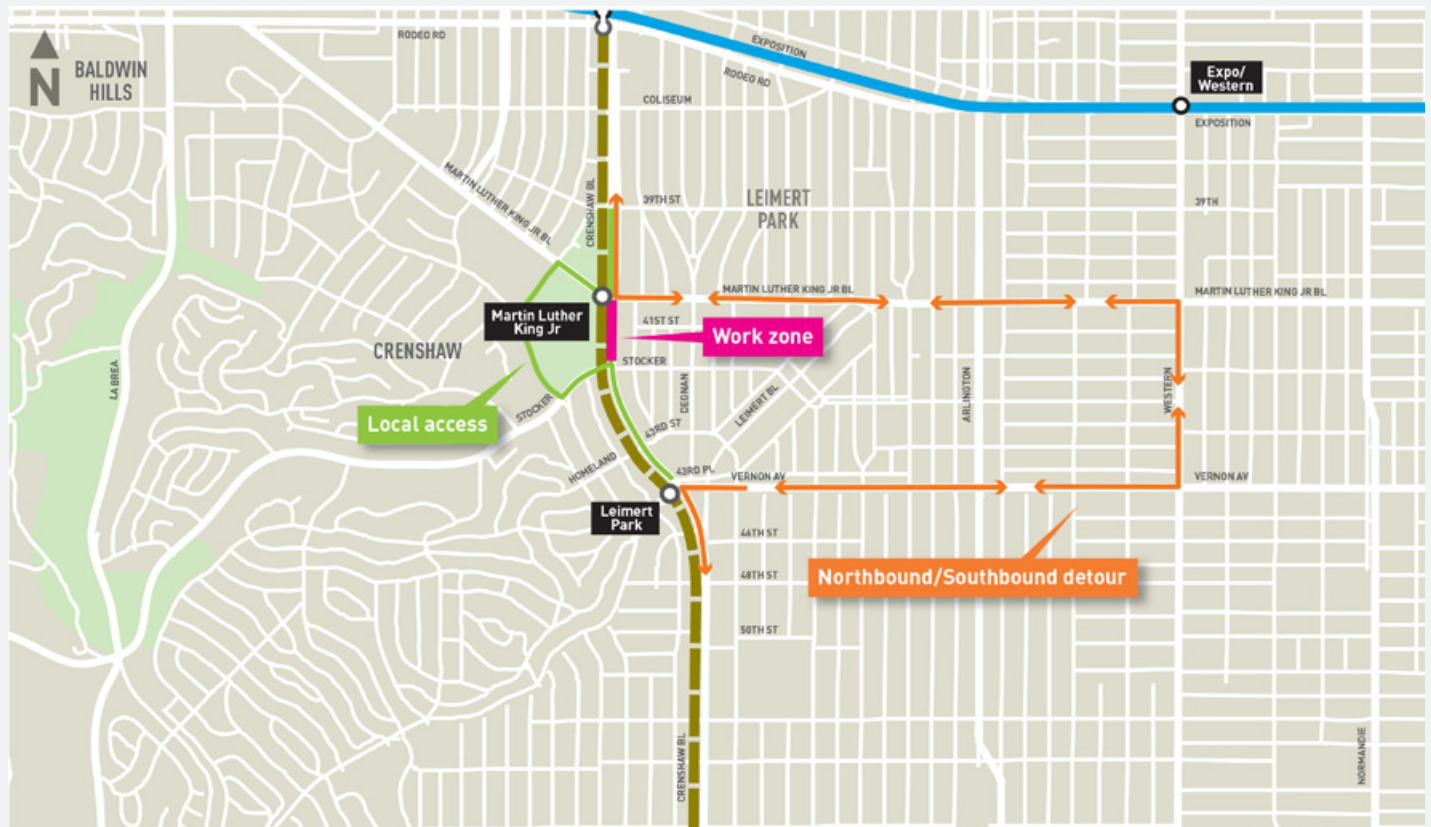
DETOURS

- > **Northbound:**
 - East on Slauson Av
 - North on Western Av
 - West on Martin Luther King Jr. Bl
 - North on Crenshaw Bl
- > **Southbound:**
 - East on Martin Luther King Jr. Bl
 - South on Western Av
 - West on Slauson Av
 - South on Crenshaw Bl

NOTE

- > Local northbound access to Crenshaw businesses and residents will be available via Leimert Bl
- > Southbound traffic will be detoured at Martin Luther King Jr. Bl
- > Local traffic to Baldwin Hills Crenshaw Mall will have access via Martin Luther King Jr. Bl, Marlton Av, Santa Rosalia Dr and Stocker St
- > Eastbound and westbound through-traffic will be closed at Vernon Av

PHASE 2: MARTIN LUTHER KING STATION RESTORATION – LATE JULY TO LATE AUGUST



ESSENTIALS

- > During the second phase, a full closure of Crenshaw Bl will be implemented from Stocker St to Martin Luther King Jr. Bl.
- > The closure for restoration of the Martin Luther King Jr. Station is scheduled to last 23 days.

DETOURS

- > **Northbound:**
 East on Vernon Av
 North on Western Av
 West on Martin Luther King Jr. Bl
 North on Crenshaw Bl
- > **Southbound:**
 East on Martin Luther King Jr. Bl
 South on Western Av
 West on Vernon Av
 South on Crenshaw Bl

NOTE

- > Crenshaw Bl between Vernon Av and Stocker St will be open to local access only
- > Local traffic to Baldwin Hills Crenshaw Mall will have access via Martin Luther King Jr. Bl, Marlton Av, Santa Rosalia Dr and Stocker St

PHASE 3: EXPO/CRENSHAW STATION RESTORATION – LATE AUGUST TO EARLY OCTOBER



ESSENTIALS

- > During the third phase, a full closure of Crenshaw Bl will be implemented from Coliseum St to Exposition Bl.
- > The closure for restoration of the Expo/Crenshaw Station is scheduled to last 37 days.

> **Southbound #2:**

- West on Jefferson Bl
- South on La Brea Av
- East on Rodeo Rd / Martin Luther King Jr Bl
- South on Crenshaw Bl

NOTE

- > Southbound traffic will be detoured at Jefferson Bl
- > Crenshaw Bl between Exposition Bl and Jefferson Bl will be open to local access only

DETOURS

- > **Northbound #1:**
 - East on Martin Luther King Jr. Bl
 - North on Western Av
 - West on Jefferson Bl
 - North on Crenshaw Bl
- > **Northbound #2:**
 - West on Martin Luther King Jr. Bl / Rodeo Rd
 - North on La Brea Av
 - East on Jefferson Bl
 - North on Crenshaw Bl
- > **Southbound #1:**
 - East on Jefferson Bl
 - South on Western Av
 - West on Martin Luther King Jr. Bl
 - South on Crenshaw Bl



Project Overview

Metro's Crenshaw/LAX Transit Project will extend from the existing Metro Expo Line at Crenshaw and Exposition Boulevards in Los Angeles, and merge with the Metro Green Line at the Aviation/LAX Station on Aviation Bl and Interstate 105 in El Segundo. The line will travel 8.5 miles, serving the cities of Los Angeles, Inglewood and El Segundo.

Once in operation, the Crenshaw/LAX Line will offer alternative transportation options to congested roadways providing significant environmental benefits, economic development and employment opportunities throughout LA County. Riders will have easier connections within the Metro Rail system, municipal bus lines and other regional transportation services.

Disclaimer: Construction is a dynamic process and information is subject to change without notice.

Please note dates are subject to change. For the most up-to-date details visit metro.net/crenshaw.

CONTACT US

-  213.922.2736
-  crenshawcorridor@metro.net
-  metro.net/crenshaw
-  [@crenshawrail](https://twitter.com/crenshawrail)
-  [crenshawrail](https://www.facebook.com/crenshawrail)

 323.466.3876 x2

Español

323.466.3876 x3

한국어 日本語
中文 русский
ភាសាខ្មែរ ภาษาไทย
Tiếng Việt ភាសាវៀតណាម

THE LEADERSHIP

STAY CONNECTED



facebook.com/crenschawchurchofchrist



twitter.com/crenschawcoc



youtube.com/crenschawcoc

ELDERS

Billy Curl
Thomas Davis, I

MINISTER

Tyson Moore

DEACONS

Robert Anderson, III
Aaron Brumfield
Edward Charles
Terry Duplessis, Sr.
Dempster Jackson
Joe Jackson
Terrill Jackson
Victor King, Sr.
Al Logan
David McDonald
Todd Moore
Myron Perryman



2719 W. Martin Luther King, Jr. Blvd. • Los Angeles, CA 90008