



DISCOVER
ST. PAUL

New to St. Paul?
Join us at the Discover
St. Paul Lunch
Next Sunday at Noon!
See page 6 for more.

**2016 CHURCH
LEADERSHIP**

See the back page for
more about St. Paul
leadership teams being
installed today.



January 24, 2016

Welcome from Pastor Bob

Welcome to St. Paul United Methodist Church! Whether you're a long-time member or a first time guest, I'm glad you're here during this message series, "The Most Important Lessons." Sometimes people ask me, if I only had a handful of messages I could deliver, what would I say? This series is my answer, what I think are the most important and fundamental lessons. I'd also like to invite you to the Discover St. Paul lunch on January 31. If you're new to St. Paul this is a great way to learn more about us, get a tour of the campus, and meet new people all while enjoying a free lunch. If you plan to join us, please fill out the Connect Card on page 4!

Take a look at this bulletin to find out more about our upcoming events and ways you can Give in Love as we begin this new year. I invite you to visit our website at stpaulumc.org, or stop by the Connection Center off the side of the sanctuary lobby if you would like to know more about us and our ministries.

I'm so excited about what the Lord is doing here at St. Paul, and I thank each of you for being a part of His work!

Bob Martin, Senior Pastor



Glorify God ♥ Grow in Faith ♥ Give in Love

GLORIFY GOD

TRADITIONAL WORSHIP at 9 AM

Prelude	David McKee, Traditional Worship Leader	
Welcome	Bobby Van Duyne, Senior Director of Ministry	
*Greet	<i>Bless His Holy Name</i>	
*Hymns	<i>Joyful, Joyful, We Adore Thee</i>	No. 89
	<i>Victory in Jesus</i>	No. 370
Apostles' Creed		No. 881
Prayer with Lord's Prayer		
Blessing of Leaders		
Offertory	<i>Order My Steps</i>	Sanctuary Choir
Doxology		No. 94
Prayer of Thanksgiving		
Transitional Song	<i>Jesus Your Name</i>	
Message	"Christianity Isn't For Cowards" Pastor Bob Martin Matthew 4:1-3	
Directed Prayer		
Closing Hymn	<i>Only Trust Him</i>	No. 337
*Benediction		
*Postlude		

*Please stand, if you are able.

If you need assistance, please let an usher know and they would be happy to help. Baby changing tables are located in both men and women's restrooms.

VISITING US TODAY?

If you're visiting us today, welcome! We hope you find St. Paul a comfortable place to worship and that you feel God's love. To find out more about us we invite you to:



VISIT OUR CONNECTION CENTER

If you have questions or would like to talk to someone about St. Paul and what we offer, visit the Connection Center to the side of the lobby.



VISIT OUR WEBSITE: www.stpaulumc.org



JOIN OUR MAILING LIST



FOLLOW OUR FACEBOOK
StPaulUMCLargo

Hear Our Prayer

Please pray for the people listed below with immediate needs:

Alison and Elise Hall	Kim Morris
Ashley	Kristi
Audrey & Michelle	Ladwayna Gilchrist
Austin	Lois Arnold
BB Abernathy	Loretta Siegfried
Bernie & Faye Suarez	Lynn Jennings
Bertha Thomas	Marcha
Beverly Hart	Marilyn Wehner
Bill Jeffrie	Mark LaPella
Bill Penhallegon	Marsha Revel
B.K.	Need employment
Bonnie & Rex Smith	Nicholas
Carol Cummings	Ola
Carolyn Goodwin	Pam Dubov
Chris Hughes	Pat Emmons
Christina Ferruchi & dad	Pat Squires
Cindy Hunter Davis	Patrick McMillan
Dan	Paula Scott
David	Peter
David & Nicole	Rachel Zimprich
Deanna	Raquel Monlaya
Delene Crown	Relocation to Largo
Dena	Rich Stemborski
Don	Ron Barker's Mother
Duane Wells	Sandy PriggsScott
Fred Johnson	Harrison
Grandchildren	Sherry Hartel
Jace	Siesta Key Tornado
Jackson	Victims
Jason	Soldiers' safety
Jason Landers	Steve & Christine
Jerry Walter	Brower
Jessica	Steve Buchanan
Jim Lucky	Steve Harvey
Jodi	Steven Pruitt
John Fady	Sue
Jonathan	Sylvia Godwin
Josh DeLoache	Todd Smyzer
Joyce	Tom Angel
June Aldrich	Tom Neville family
Kamalinie's family	Travis Ward
Karen Goodin family	Virgil Singleton
Kat	Wayne Boyd
Kenneth A.	Wayne Shock
Kevin Seitz	Whitney/Sandy Myers

10:30 CONTEMPORARY WORSHIP

A typical contemporary worship at St. Paul lasts about an hour. Our worship is filled with current Christian music from our praise band. You are invited to sing along with the words on the screens, or simply enjoy the music. Our scripture and message are the same theme as the 9 a.m. worship. You'll notice every week there is a time in our worship to give financially. This is how we support the ministries and missions of our church. We hope you feel comfortable and experience the love of God with us today!



ABOUT
60 MIN.



PASSIONATE
MUSIC



NO
PRESSURE

Online Giving

If you need a convenient way to make recurring contributions or you plan to make an additional gift, we encourage you to use our electronic giving options. To set up a recurring giving schedule, or to give a one time gift online, visit stpaulumc.org and click the Giving button, or use this QR code.



Flowers

Today's sanctuary flowers are given by:

♥ Audrey Bittle in loving memory of sister Janette Franke

Do you have an event or person you would like to honor with flowers? You can give a flower bouquet to the Glory of God. Call the church office at 584-8165, visit the Giving page on our website, or e-mail church@stpaulumc.org. Bouquets are \$40. Be sure to include your inscription with your order. Flowers can be picked up after the second worship or at the church office during the week.

Offering Envelopes

This is the last week to pick up your offering envelopes after either worship time. Please help us save money on postage by picking your envelopes up today. If you want offering envelopes, and you cannot find yours on the table, please put your name on the sheet provided.

Know someone who would like to worship with us, but is unable to join us in the sanctuary? Invite them to worship with us live online every Sunday at 9 or 10:30 a.m. Just visit our website: stpaulumc.org and click "Watch."

St. Paul United Methodist Church CONNECT CARD

Fill out as much as you choose, then tear off and return in the offering plate, the basket by the center exit, or at the Connection Center to the side of the lobby.

Date: January 24, 2016 9 AM 10:30 AM

Name: _____

E-mail: _____

Phone: _____

Address: _____

I am a:

- 1st Time Guest 2nd Time Guest
 Regular Attendee Member
 Winter Resident
 Please update my information.

I came today because:

- I drove by I visited the website
 I've been here before I received a mailing
 I was invited by

Other: _____

I want to join your e-mail list:

- Weekly Pastor's E-Note Growth Guide
 This Week at St. Paul Newsletter
 Youth Children

Other: _____

Be sure to put your e-mail address at the top of the card!

How can we pray for you?

- Do NOT publish in bulletin.
 Include on prayer chain.
 I would like to connect with a Stephen Minister.

Don't forget to fill out the other side!

St. Paul United Methodist Church CONNECT CARD

Fill out as much as you choose, then tear off and return in the offering plate, the basket by the center exit, or at the Connection Center to the side of the lobby.

I am interested in:

- Rededicating my life to Jesus
- Being baptized
- Becoming a member
- Joining a Source Group
- Serving at the church

How: _____

- Serving in the community

How: _____

- Learning more about St. Paul ministries

Specifically: _____

- Other: _____

I need a name tag for:

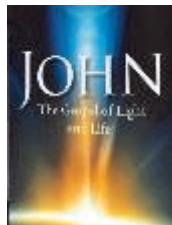
(Name tags can be picked up in the Connection Center to the side of the lobby two weeks after your request is placed.)

I will attend:



- Discover St. Paul Lunch
Sunday, Jan. 31 | Noon
If you're new to St. Paul, join us for an informal lunch, a tour of the facilities, and the chance build relationships with others and meet some of our staff.

- Lenten Study
Feb. 17–March 23
Explore the Gospel of John, the most deeply spiritual of the four gospels.



- I would be interested in attending Sunday School at 9 a.m.

- I am interested in leading the class.

NEXT STEPS

Want to know more about St. Paul, meet new people, or get more involved? TAKE THE NEXT STEP!



CONNECTION CENTER

Our Connection Center is located in the room to the side of the sanctuary. Stop by if you have any questions, need information, or would like to speak to someone about St. Paul.

DISCOVER ST. PAUL

Join us on Jan. 31 at noon for an informal lunch focused on who we are as a church, our mission, core values, a tour of the facilities, and a chance to meet some of our staff and new people who are also interested in the church.



STARTING POINT CLASS

This class is for anyone who is new to attending church or is coming back to church. It covers topics like who we are as Methodists, a spiritual gifts assessment, and basics of our faith.



ONGOING GROUPS

- Age level groups (ex. JOY, IGNITE)
- Source Groups (Small groups of twelve or less)
- Sunday School



SHORT TERM GROUPS

- Topical classes covering things like
 - ⇒ Finance
 - ⇒ Parenting
 - ⇒ Caretaking
- Topical and seasonal Bible studies and discussion

VISIT OUR WEBSITE
WWW.STPAULUMC.ORG

for more information about our ministries.

Don't forget to fill out the other side!

GROW IN FAITH

Adult Studies

Adult Sunday Morning Classes

Adults of any age are invited to join one of our Sunday school classes. All classes gather at 10:15 a.m.

Inspirations - Purple Door Classroom (101) in **Bldg C**

Crusaders - Conference Room 1 in **Bldg B**

Friendship - Room 201 (Community Room) in **CLEC**
Dr. Berkley Reynolds will teach on *Colossians* in the Friendship Class today.

Bereans - Room 101 (Carpenter's Room) in the **CLEC**

Are you interested in attending Sunday School at 9 a.m.?
Fill out and return the Connect Card on page 4.



JOY (Just Older Youth)

Older adults are invited to join us in the Christian Life Enrichment Center at 10:30 a.m. on Tuesdays. JOY is currently studying the Sermon on the Mount in "*Living Life Right Side Up*." This Tuesday, Jan. 26, Pastor Bob will teach on "*Lust and Marriage*."

Come be a part of this time of worship, study, and fellowship. If you have any questions, contact Traditional Worship Leader, David McKee at 584-8165 x228.

Small Things, Big Difference

Wednesdays | 6:30 p.m. | Jan. 13—Feb. 3 | Courtyard
Often we make major resolutions for the new year, then become discouraged when we can't keep them. This class is about learning how to embrace making small, manageable, incremental changes that really add up. The class meets outside under the courtyard lights. Join us at 6 p.m. for refreshments. Class starts at 6:30 p.m. In case of bad weather or cold we will meet in the sanctuary. Nursery provided. Children and youth are invited to attend their own Wednesday activities at the same time.

Soaring Eagles Breakfast

Saturday 7:30 a.m. | Room 201 (CLEC)
All men are invited for fellowship, prayer and devotionals with the Soaring Eagles on Saturdays. This Saturday, and every last Saturday of the month, ladies are invited to join the group for breakfast at 7:30 a.m.



Sermon Videos Temporary Unavailable

Due to technical issues we are working on resolving, we are temporarily unable to post videos of our past sermons beginning with the December 24 worship. We apologize for the inconvenience.

Gulf Central District Lenten Jubilee

Sunday February 21 | 3-5:30 p.m. | Seminole HS
The congregations of the Gulf Central District are invited to an outdoor worship and fellowship event featuring music from two wonderful praise bands. The event will be held at the Seminole High School football stadium on Sunday, February 21. There is plenty of stadium seating, space to set pop-up canopy tents and sun shelters or picnic blankets and folding chairs. Worship time will include a message from our District Superintendent, testimonials, communion, and will conclude with an invitation to return to Christ or turn to Christ for the first time.



PREVIEW NIGHT
FRIDAY, MARCH 4
4 - 8 PM
Admission: \$1 Donation

SATURDAY, MARCH 5
8 AM - 2 PM
Free Admission

Note that the sale is not open on Thursday night this year!
Preview night is on Friday, and the free open admission day will be on Saturday to allow more people to attend.
Visit page 8 for information on donating or volunteering!

GROW IN FAITH

DISCOVER ST. PAUL

Discover St. Paul Lunch
Jan. 31 | Noon

Are you new to St. Paul? Join us for this informal lunch to find out more about who we are as a church, our mission, and core values. We'll also give you a tour of the facilities, and introduce you to some of our staff as well as other new people who are interested in the church. Want to join us? Email church@stpaulumc.org, call 584-8165, or fill out the Connect Card on page 4 of this bulletin by this Wednesday!



Adults Ages 18-35

IGNITE

Join IGNITE tonight at 7 p.m. in room 202 of the Christian Life Enrichment Center for study and discussion. Next week, Jan. 31 they will serve the homeless in Clearwater as they do every fifth Sunday. If you'd like to serve with them plan to meet by the church office at 3:30 p.m. next Sunday. E-mail IGNITE leader Felix Koutsourais c24go1@aol.com for more information. Follow the IGNITE Facebook to keep up to date on their activities.



Source Groups

Source Groups are small groups of people, twelve or less, who meet regularly to worship, study, pray, serve and more. These groups offer support, fellowship, and the chance to Grow in Faith in a close-knit community group of fellow believers. If you would like to join a source group and walk with others to journey in faith together, contact our Senior Director of Ministry, Bobby Van Duyne at bobby.v@stpaulumc.org or 583-8165 x233.



Youth 6th-12th Grade, Alison Van Duyne,
Youth Ministry Director, alison.v@stpaulumc.org

Sunday Night Youth Group



TONIGHT: DISTANCE

Bottom Line: Pick what you pursue. Have you ever had a friend you were really close to, but then they got pulled away by a new hobby, a new relationship, or a new group of friends? And as you start moving in two different directions, the distance between you grows. In the same way, when we start to pursue other things more than God, without even realizing it we can move in another direction—one that leads us further away from Him. As we look at what Paul has to say about chasing the wrong things, you may find yourself with a desire to turn back and pursue Him—the *best* thing.

Join the middle and high school youth from 5:30–8 p.m. Students are invited for group games, exciting crowd breakers, passionate worship, biblical teaching, and a chance to connect with others through Source Groups. The group meets in the Mariposa Café at 5:30 p.m. for dinner, then branches out to the Youth Room, Gym or Fellowship Hall. Dinner is \$3. Students must register online in advance by the Wednesday before. Visit www.stpaulumc.org to reserve a meal.

Worship Arts on Wednesdays at 6:30 p.m.

Students are invited to share their creative gifts through drama, video production and more on Wednesdays. Drop-off students in the courtyard between 6 and 6:30 p.m. They will then move to another location based on the night's activity.

Super Bowl Party on Feb. 7 from 6-9 p.m.

Students and 5th graders are invited to join us for a **Super Bowl Party! We'll eat, watch the game and play** in the gym! There is no cost for dinner, but students should bring an appetizer to share. Visit the dinner sign-up form on our website to let us know which appetizer you're bringing.

GROW IN FAITH



Children *Infant- 5th Grade, Kaitie Johnson,
Director of Children's Ministry, Kaitie.j@stpaulumc.org*

Sunday Morning Lil' Kidz Care

Lil' Kidz Care is available every Sunday for infants to 4-year-olds, at 8:45 a.m. in the nursery building (Bldg B) next to the sanctuary. Sign in and be given a pick-up card that you will need to pick-up your child.

Sunday Morning Lil' Kidz Class

Our preschool class for 3 to 4 year-olds meets at 10:30 a.m. in the Red Door Room of Bldg C.

Sunday Morning for K- 5

Sunday Morning Small Group at 9:00 a.m.
Children's Ministry Space in **Bldg C**.

Sunday Morning Worship at 10:30 a.m.
Children's Ministry Space in **Bldg C**.



January Sunday Series: Power Up!

TODAY: Know when to stop. Our memory verse reminds us that when we ignore self-control, we leave ourselves open to responding in ways that could end up hurting us. In week four, we'll see what God says in Proverbs 25:16 - "If you find honey, eat just enough. If you eat too much of it, you will throw up." You can have too much of a good thing. Here we are given a clear picture of what could happen if we don't know when to stop.



Follow Our New Children's Ministry Facebook
Lots of exciting things are happening in our Children's Ministry this year. If you want to keep up with everything that's going on, follow our new Children's Ministry Facebook:



[StPaulChildrensMinistry](https://www.facebook.com/StPaulChildrensMinistry)

Parent's Morning Out Ends This Month

Parent's Morning Out is a safe place where your kids can have fun while you take time for yourself on Tuesdays and Thursdays from 8:30 a.m. to 12:30 p.m. Cost per child is \$20 per day. **PMO will go on hiatus at the end of Jan, so be sure to make alternate arrangements for your children starting in February.**



Worship Arts For Children and Youth

Wednesdays at 6:30 p.m.
Children ages 3 through 5th grade are invited to join us on Wednesdays for a lesson,

games and activities, and children's praise choir practice. Drop off children between 6 and 6:30 p.m. in the courtyard. Class begins at 6:30 p.m. Pick up children at 7:30 p.m. in the Children's Ministry Space. Youth have their own Worship Arts activities where they can share their creative gifts in various ways through drama, video production and more.

GIVE IN LOVE

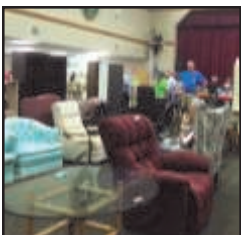


Blood Drive February 7

We are hosting a blood drive on Sunday, February 7 from 8:45 a.m. until noon. At our last drive we collected six units of blood for local area hospitals. Every donation can save up to three lives so together we can save 18 or more lives if we meet or exceed that total again this time! Anyone who donates will receive the gift of a Oneblood Fleece Blanket. If you are able to donate, please plan to roll up your sleeves and help save lives in our local community.

Rummage Sale Donations & Volunteers Needed

The Rummage Sale is one of our most popular events, and many people look forward to it all year, but it takes a lot of donations and volunteers to make it happen! Can you help us in one of the ways below?



- Donations

Clear out your closet and donate the treasures you no longer need! Donations can be dropped off at Open Arms at any time. Please wrap your donations and place them in a box. Pick-ups are on Saturdays only. Contact Marjorie Jagers at 727-403-7902 to schedule a pick-up. We cannot pick up mattresses, TVs or organs.



- Volunteers

We need help setting up before the Rummage Sale on Wednesday and Thursday, as well as Friday morning. We also need lots of people to help out when the sale is open on Friday and Saturday to cashier, greet, help with food or help with sales in other ways. We

have jobs for all ages and abilities. Contact Sherry Shields at 727-581-5835 to sign up as a volunteer.



Greeter Coordinator Needed

We are looking for a greeter coordinator for the 10:30 a.m. service. We have plenty of volunteers who are willing to greet, so we need someone who can schedule 10:30 a.m. greeters and communicate scheduling and assignments. If you have the gift of organization and you are interested in helping, contact Laurel Fortuna at laurel.f@stpaulumc.org or 584-8165 x208.



Ditty Bag Project

With your help our United Methodist Women supplied homeless shelters and migrant work agencies with 100 ditty bags last year!

We hope to increase our pledge to 125 bags this year, and we need your help! From January through April, we will feature items that will help us reach our goal of 125 bags. Leave donations in the box in the church office or in the sanctuary lobby on Sundays. Keep an eye on the bulletin each month for a new list of items.

FOR JANUARY

- Shampoo-Conditioner Combo (Adult & Child)
- Deodorant (Men & Ladies)
- Notebooks (Adult and Child)

United Methodist Women Scholarship

The St. Paul United Methodist Women Higher Education Scholarship is available to any graduating high school senior girl or to any women already in college or seeking to attend college in the fall of 2016. A total of \$1,000 will be awarded to one or more recipients who are selected. **The deadline to fill out an application is March 1.** Winners will be notified by May 1. For more information and an application, contact Lyn Sears at 480-7961.

Coming this Week

Sunday, January 24

Courtyard Coffee	8:30 AM
Lil' Kidz Nursery	8:45 AM
Traditional Worship	9:00 AM
Lil' Kidz Small Group	9:00 AM
Bereans	10:15 AM
Crusaders	10:15 AM
Friendship	10:15 AM
Inspirations	10:15 AM
Contemporary Worship	10:30 AM
Homeless Feeding	3:30 PM
Youth Group	5:30 PM
IGNITE	7:00 PM

Monday, January 25

Office Closed

Boy Scouts	7:00 PM
------------	---------

Tuesday, January 26

Sonrise Men's Study	6:30 AM
JOY	10:30 AM
Volleyball	1:00 PM

Wednesday, January 27

UMW: Dorcas	9:00 AM
Handicapable	6:15 PM
Small Things Class	6:30 PM
Worship Arts	6:30 PM
Volleyball	7:45 PM

Thursday, January 28

Men's Bible Study	7:00 AM
Prayer Shawl	5:30 PM
Bells of St. Paul	5:30 PM
Choir Rehearsal	7:00 PM
Intercessory Prayer	7:00 PM

Friday, January 29

Church Office Closed

Handi Craft Night	7:00 PM
-------------------	---------

Saturday, January 30

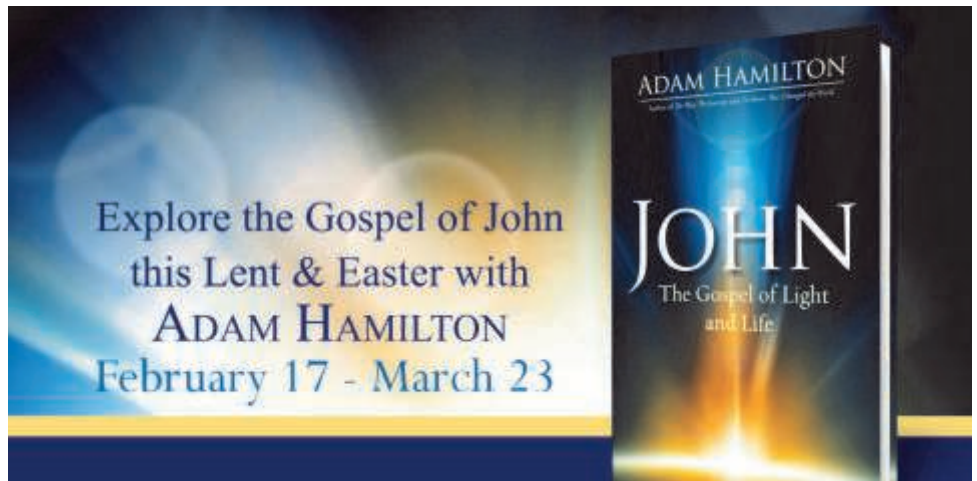
Soaring Eagles	7:30 AM
----------------	---------

*

Visit our website
www.stpaulumc.org for our full
 calendar.

*

E-mail church@stpaulumc.org or call
 the church office if you have an
 event to schedule.



Church-wide Lenten study

Feb. 17—March 23

The Gospel of John is the most deeply spiritual of the four gospels. It includes some of the loftiest and most loved verses in all the Bible: "And the Word became flesh...", "For God so loved the world...", "You who are without sin cast the first stone...", "I am the resurrection and the life...", "I am the way, and the truth, and the life."

The writing is filled with rich images and profound truths, and John notes that his aim is for his readers not only to believe in Jesus Christ, but to "have life in his name." This Lent, join Adam Hamilton and experience a season of spiritual growth and life-changing renewal during this series: "John: The Gospel of Light and Life." We will read and explore the entire Gospel of John as we prepare our hearts and minds during the Lenten season.

Topics Include:

- The Word Made Flesh
- The Miraculous Signs of Jesus
- **The "I Am" Sayings of Jesus**
- The Farewell Discourse
- The Arrest, Trial, and Crucifixion of the King
- Eternal Life

We would like to launch Sunday School classes at 9 a.m. on Sundays for those who attend the 10:30 a.m. worship. The first study would be based on this series. If you are interested in attending or in leading a 9 a.m. Sunday School class, please fill out and return the Connect Card on page 4 or call 584-8165.



WE NEED YOU
 to make our new family directory complete

Photo Directory Final Days

We have two extra days scheduled to take pictures for the photo directory. There are still quite a few families and individuals who are not represented with photos in our directory. If you haven't taken your photos yet, please reserve a time on Monday, Feb. 1 or Tuesday, Feb. 2 and help

make this directory a true representation of St. Paul. You do not have to buy any photos to be included in the directory, and everyone who participates gets a free 8x10 with no purchase necessary. To reserve your photo appointment, visit our website - stpaulumc.org - and click on the link under News and Announcements. You can also sign up in the Connection Center on Sundays or call the church office.

St. Paul United Methodist 2016 Leadership Teams

Church Council

Pastor
 Chairperson
 Lay Leader
 Conference Delegate
 Recording Secretary
 Bookkeeper/Treasurer
 Financial Secretary
 Finance Team Leader
 Trustee Team Leader
 Staff Parish Team Leader
 United Methodist Women President
 Source Group Team Leader
 Youth Ministry Adult Representative
 Children's Ministry Adult Representative
 Son Kissed Preschool
 Women's Ministry
 Stephen Ministry
 Handicapable
 Prayer Team Leader
 Campus Ministry Representative
 Membership Secretary
 Missions & Outreach Team Leader
 Children's Home Representative
 Executive Director of Church Administration

-The Reverend Bob Martin
 -Jim Hale
 -Felix Koutsourais
 -Ken Smith
 -Joan Chesak
 -Pam Tribbie
 -Mary Vaughn
 -Terry Garvin
 -Mike Constantinou
 -Susann Price
 -Rita Fowler
 -Bobby Van Duyne
 -Mark Miller
 -Diane Cole
 -Susan Veghte
 -Sherry Shields
 -Judy Lazanis
 -Rene Townes
 -Patsy McLaughlin Bauer
 -Bev Koutsourais
 -Mary Vaughn
 -Pam Dubov
 -Garret Digman
 -Arch Johnston

Staff Parish Relations Team

*Susann Price, Grant Corrigan, Felix Koutsourais, Brad Finkbiner, Deborah Digman, Keith Stanton, Judy Lazanis, Ken Smith, Carlton Ward, Mark Edmunds, Dawn Green (Staff Advisor: Bob Martin)

Finance Team

*Terry Garvin, Linda Benoit, Benjamin Shockey, Bob Scordino, Linda Pennington, Noel White (Staff Advisor: Arch Johnston)

Stewardship

*Terry Garvin, Jim Hale, Arch Johnston, Laurel Fortuna (Staff Advisor: Bob Martin)

Trustees Team

*Mike Constantinou, Kara Smith, Anne James, Cheryl Ciandella, Jerry Spaulding, Wendy Copeland, George Handura, Nils Giere, Steve Towne (Staff Advisor: Arch Johnston)

Missions & Outreach Team

*Pam Dubov, Holly Baumann, Kathy Carr, Yvette Carter, Patti Martin, Sharon Herman, Garrett Digman (Staff Advisor: Pastor Bob Martin)

Nominations Team

*Pastor Bob Martin, Felix Koutsourais, Kay Lashbrook, Bobby Van Duyne, Marjorie Jagers, Jerry Jiovanni, Laurel Fortuna, Arch Johnston, Devon Koutsourais, Deb Byrnes, Ed Cook

* Denotes Team Leader



The Reverend Bob Martin, Senior Pastor

Address: 1199 Highland Avenue in Largo, 33770

Phone: (727) 584-8165

Office Hours: 8 a.m.—5 p.m., Monday-Thursday

E-mail: church@stpaulumc.org

Prayer: (727) 559-PRAY

www.stpaulumc.org

