



**This Saturday**  
Christian Life Enrichment Center  
10 a.m. - 2 p.m.

Check page 8 of this bulletin for a few final instructions and listen for an update from Pastor Pam during worship.

Turn to page 6 to find out how our Student Ministry helped our Camp XP campers connect with God through prayer!



July 31, 2016

Welcome from Pastor Bob

Welcome to St. Paul United Methodist Church! Whether you're a long-time member or a first time guest, I'm glad you're worshipping with us this Sunday. This Saturday is our annual Back to School Jubilee, one of the wonderful ways that our church reaches out to the community and helps those in need. This is our third Back to School Jubilee, and each year we have been able to help more kids because of how St. Paul and the community have embraced this opportunity to Give in Love. I am so grateful to everyone who is taking part in this outreach by giving money, school supplies, or your time. What a blessing to not just help make sure almost 400 kids are ready for school, but also to let them know they are loved!

Take a look at this bulletin for information about other upcoming events and ways you can Grow in Faith and Give in Love. I invite you to visit our website at [stpaulumc.org](http://stpaulumc.org), or stop by the Connection Center off the side of the sanctuary lobby if you would like to know more about us and our ministries.

Thank you for being part of the Lord's work here at St. Paul. With God's help there is nothing we can't do!



*Bob Martin*  
Bob Martin, Senior Pastor

Glorify God ♥ Grow in Faith ♥ Give in Love



## TRADITIONAL WORSHIP at 9 AM

- Prelude Aaron Cassette, Accompanist
- Welcome Pastor Pam Dubov
- \*Greet *Oh How He Loves You And Me*
- \*Call to Worship  
 Leader: Trust in the Lord at all times, O People; God is a refuge for us.  
 People: God is our rock and our salvation; we shall not be shaken.  
 Leader: God is good and in God's work we find our strength.  
**People: We sing of all God's wonderful works! We give thanks and praise to the Lord!**
- \*Hymns *Spirit of God, Descend upon My Heart* No. 500  
*Every Time I Feel the Spirit* No. 404
- \*Apostles' Creed No. 881
- Prayer with Lord's Prayer No. 895
- Blessing of Backpacks
- Offertory *Prayer for Guidance* Sanctuary Choir
- \*Doxology *Praise God, From Whom...* No. 94
- \*Prayer of Thanksgiving
- \*Transitional Hymn *Love Divine, All Loves Excelling* No. 384
  
- Message Can We Define Prayer? Pastor Bob Martin  
Psalm 139:23-24
  
- Directed Prayer
- \*Closing Hymn *Take Time to Be Holy* No. 395
- \*Benediction
- \*Postlude

\*Please stand, if you are able.

If you need assistance, please let an usher know.

Baby changing tables are located in both men and women's restrooms.

This Sunday's 9 AM Greeters: Betty Meyers & Jo Smith

### VISITING US TODAY?

If you're visiting us today, welcome! We hope you find St. Paul a comfortable place to worship and that you feel God's love. To find out more about us we invite you to:



#### VISIT OUR CONNECTION CENTER

If you have questions or would like to talk to someone about St. Paul and what we offer, visit the Connection Center to the side of the lobby.



VISIT OUR WEBSITE: [www.stpaulumc.org](http://www.stpaulumc.org)



JOIN OUR MAILING LIST



FOLLOW OUR FACEBOOK  
StPaulUMCLargo

### Making a Prayer Request

We have included a prayer request section on the Connect Card in this bulletin. If you have a prayer request, write it on the Connect Card, tear off, and drop it at the Connection Center or in the offering plate. You can also call our prayer line at any time: 559-PRAY (7729).

### Hear Our Prayer

Please pray for the people listed below with immediate prayer needs:

- |                                    |                        |
|------------------------------------|------------------------|
| Phil Chavez                        | Chad                   |
| Patty Nuytten                      | Mark LaPolla           |
| Bernie Suarez                      | Kat Farhangi           |
| Michael Ruchak                     | Jace Michael           |
| Elaine McCarthy                    | Kristi Burslem         |
| Todd Smyzer                        | Steve Brower           |
| Jamie & Mikie                      | Peace for our world    |
| Larry Lashbrook                    | Bobby & Lynn           |
| Kim Morris                         | DeSantis               |
| Darlene Mitchel                    | Carl J.                |
| Deb Venello                        | Dave W.                |
| Anna Flemming                      | Samantha               |
| Julie Ann McMillan & family        | Shirley                |
| Family of Aubrey                   | Krista                 |
| Reece                              | Jason & Nick           |
| Larry Lashbrook                    | Bobby Quinton          |
| Jim Rolfe                          | Nicole & David         |
| Stephen Ministry                   | Heather, Kevin & baby  |
| Carolyn Goodwin                    | Greg, Meg & Jackson    |
| Nancy Simmons & family             | Kathy Seitz            |
| Ralph Moon & family                | Susie Cabrera          |
| Gwen Moon                          | Isabel & Amy           |
| Maria Hayes                        | Matthew Eckley         |
| Traveling Mercies                  | Paul Fumea             |
| Betty Smith                        | Nancy Simmons          |
| Tim Porter                         | Jim Lucky              |
| Mary Jane Arn                      | Kenneth A.             |
| Mary Barrett                       | John Fady              |
| Lisa Cunningham                    | Jackson                |
| Charles Petleys                    | Steve Harvey           |
| Libby Burke & family               | Kim Morris             |
| Peter                              | Jenny Walter           |
| Youth, Children & Womens' Ministry | Rich Stemboroski       |
| Joan                               | Allison and Elise Hall |
| Juli and baby                      | Audrey and Michelle    |
| Julie LeClerc Miller               | Talbert                |
| Mark Naedel                        | Zackary Kueker         |
| Anna Morrice                       | Wayne Boyd             |
| Wanda Barker                       | Bonnie Wismer          |
| Kathy Tubbs                        |                        |
| Brad Jones                         |                        |
| Dick Roller                        |                        |
| Josh DeLoach                       |                        |
| Jim McCormick                      |                        |

## 10:30 CONTEMPORARY WORSHIP

A typical contemporary worship at St. Paul lasts about an hour. Worship is filled with current Christian music from our praise band. You are invited to sing along with the words on the screens, or simply enjoy the music. You'll notice there is a time in our worship to give financially. This is how we support the ministries and missions of our church. We hope you experience the love of God with us today!



ABOUT  
60 MIN.



PASSIONATE  
MUSIC



NO  
PRESSURE

### Online Giving

If you need a convenient way to make recurring contributions or you plan to make an additional gift, we encourage you to use our electronic giving options. To set up a recurring giving schedule, or to give a one time gift online, visit [stpaulumc.org](http://stpaulumc.org) and click the Giving button, or use this QR code.



### Flowers

Today's flowers were given by:

- Molly and Bill Sanders in celebration of the birthday of her uncle, A.H. Toler
- Rev. Jeanette Burton In loving memory of her husband, Rev. Richard W. Burton
- Alice Ricketts in loving memory of her daughter, Jessica Morgan Ricketts
- Inge Crowningshield in loving memory of her granddaughter, Jessica Morgan Ricketts

Do you have an event or person you would like to honor with flowers? You can give a flower bouquet to the Glory of God. Call the church office at 584-8165, visit the Giving page on our website, or e-mail [church@stpaulumc.org](mailto:church@stpaulumc.org). Bouquets are \$40. Be sure to include your inscription with your order. Flowers can be picked up after the 10:30 a.m. worship or at the church office during the week.

### Deaths

Please pray for the families and friends of the people listed below, who recently passed on to life eternal:

Aubrey Reece  
Dorothy Disharoon

## St. Paul United Methodist Church CONNECT CARD

Use this card to record your attendance and share your prayer requests or other needs and interests. Tear off and return in the offering plate, the basket by the center exit, or the Connection Center. You do not need to fill out the entire card, only the parts that apply to you!

Date: July 31, 2016 9 AM 10:30 AM

Name: \_\_\_\_\_

E-mail: \_\_\_\_\_

Phone: \_\_\_\_\_

Address: \_\_\_\_\_

I am a:

- 1st Time Guest       2nd Time Guest  
 Regular Attendee       Member(s)  
 Winter Resident  
 Please update my information.

I came today because:

- I drove by       I visited the website  
 I've been here before       I received a mailing  
 I was invited by \_\_\_\_\_  
 Other: \_\_\_\_\_

I want to join your e-mail list:

- Weekly Pastor's E-Note       Growth Guide  
 This Week at St. Paul Newsletter  
 Youth       Children  
 Other: \_\_\_\_\_

Be sure to put your e-mail address at the top of the card!

How can we pray for you?

\_\_\_\_\_  
 \_\_\_\_\_  
 \_\_\_\_\_

- For Military Prayer List  
 Do NOT publish in bulletin.  
 Include on prayer chain.  
 I would like to connect with a Stephen Minister.

**Don't forget to fill out the other side!**

St. Paul United Methodist Church  
**CONNECT CARD**

Use this card to record your attendance and share your prayer requests or other needs and interests. Tear off and return in the offering plate, the basket by the center exit, or the Connection Center. You do not need to fill out the entire card, only the parts that apply to you!

I am interested in:

- Rededicating my life to Jesus
- Being baptized
- Becoming a member
- Joining a Source Group
- Serving at the church

How: \_\_\_\_\_

- Serving in the community

How: \_\_\_\_\_

- Learning more about St. Paul ministries

Specifically: \_\_\_\_\_

- Other: \_\_\_\_\_

I need a name tag for:

(Name tags can be picked up in the Connection Center to the side of the lobby two weeks after your request is placed.)

\_\_\_\_\_

I would like to volunteer to help with:

- Worship Arts/Technical Arts Team  
I can help behind the scenes of worship at:  
 9 AM  10:30 AM
- Greeting  Ushering  
 9 AM  10:30 AM
- Help with Rummage Sale Pick-Ups
- Next Year's 100 Dresses Project
- Martha Ministry—June/December Team

I would like to register for:

- GriefShare Support Group Starting Sept. 14  
Cost of required class workbook: \$18  
 I need childcare for ages: \_\_\_\_\_

Remember to fill out the other side with your name and contact info!

**Don't forget to fill out the other side!**

# NEXT STEPS

Want to know more about St. Paul, meet new people, or get more involved? TAKE THE NEXT STEP!



## CONNECTION CENTER

Our Connection Center is located in the room to the side of the sanctuary. Stop by if you have any questions, need information, or would like to speak to someone about St. Paul.

## DISCOVER ST. PAUL

Discover St. Paul is an informal lunch focused on who we are as a church, our mission, core values, a tour of the facilities, and a chance to meet some of our staff and new people who are also interested in the church.



## STARTING POINT CLASS

This four week class covers basics of our faith. For anyone who is new to attending church or is coming back to church.

## ONGOING GROUPS

- Age level groups (ex. JOY, IGNITE)
- Source Groups (Small groups of twelve or less)
- Sunday School



## SHORT TERM GROUPS

- Topical classes covering things like
  - ⇒ Finance
  - ⇒ Parenting
  - ⇒ Caretaking
- Topical and seasonal Bible studies and discussion

VISIT OUR WEBSITE  
**WWW.STPAULUMC.ORG**

for more information about our ministries.

# GROW IN FAITH

## Adult Studies

### Adult Sunday Morning Classes

Adults of any age are invited to join one of our Sunday school classes.

#### 10:15 a.m. Sunday school classes

**Inspirations** - Purple Door Classroom (101) in **Bldg C**

**Crusaders** - Conference Room 1 in **Bldg B**

**Friendship** - Room 201 (Community Room) in **CLEC**

**Bereans** - Room 101 (Carpenter's Room) in the **CLEC**

### JOY (Just Older Youth)

Older adults are invited to join us at 10:30 a.m. this Tuesday in the Christian Life Enrichment Center for worship, study and fellowship. This Tuesday, August 2, Pastor Bob will teach. If you have any questions, contact Senior Director of Ministry, Bobby Van Duyne at 584-8165 x233.



## Adults Ages 18-35



Every fifth Sunday is a "Service Sunday" for IGNITE, our group for adults ages 18-35. Join them by the church office today at 3:30 p.m to help serve the homeless in Clearwater. After serving they often share dinner together. E-mail IGNITE leader, Felix Koutsourais at [c24go1@aol.com](mailto:c24go1@aol.com) for more information.



## Source Groups

Source Groups are small groups of people who meet regularly to worship, study, pray, serve and more. These groups offer support, as well as the chance to build relationships and to Grow in Faith in a close-knit community of believers. If you would like to join a source group and walk with others in faith together, contact our Senior Director of Ministry, Bobby Van Duyne at [bobby.v@stpaulmc.org](mailto:bobby.v@stpaulmc.org) or 584-8165 x233. You can also indicate your interest on the Connect Card.



## Grief Share Support Group

Wednesdays at 6 p.m. starting September 14

Required Workbook: \$18

GriefShare is a weekly grief support group that will meet in room 202 of the Christian Life Enrichment Center starting in September. The group is open to anyone over the age of 18 who has suffered the death of a loved one, and offers an opportunity to share the journey through grief with others who understand how you feel. All of the group leaders have suffered a loss of their own and have been where you are now. Weekly meetings include informational videos from grief recovery experts, small group discussion and support, and a workbook with personal study exercises and more. The cost of the workbook is \$18. The group will last 13 weeks, and you do not have to attend every week, just come when you can. This group is open to the public, so if you know of anyone who is dealing with grief, please pass on the group information to them.

If you plan to attend, you must register in advance by September 8 so we can make sure we have enough books for everyone. You can call the church office at 727-584-8165 to register, or fill out the Connect Card in this bulletin. Childcare is provided. Let us know what age you'll need childcare for when you register.



## Student Ministry

6th-12th Grade  
Alison Van Duyne, Student Ministry  
Director, [alison.v@stpaulumc.org](mailto:alison.v@stpaulumc.org)

### SUNDAY NIGHT YOUTH GROUP



#### TONIGHT: Kill Them With Kindness

**Bottom Line: You set the pace of peace. We've all experienced the annoying feeling when technology doesn't work the way it's supposed to. Your Internet goes down, your phone dies, Netflix gives you an error message, and you think your head might actually explode with frustration! When it comes to broken technology, we want it fixed immediately. The same is true of other areas in our life, especially broken relationships. While technology can be repaired or replaced, fixing a broken relationship takes a lot more time and effort. Sure, you might be able to make peace in the moment, but keeping that peace over time is a much **harder thing to do. James, Jesus' brother, understood** a lot about complicated relationships. After all, he grew up in a family with complications that could make ours look simple. And he tells us exactly what we can do to not only find peace, but also to keep it. **As we look at James' advice alongside the example of his brother, Jesus, we'll see how we can set the pace of peace in our relationships.****

Students are invited to join us in the Mariposa Cafe at 5:30 p.m. for dinner each Sunday. Dinner is \$3. Students must pre-register by the Weds. before by filling out the online form on [stpaulumc.org](http://stpaulumc.org). After dinner students branch out for group games, exciting crowd breakers, passionate worship, biblical teaching, and a chance to connect with others through Source Groups. Time together ends at 8 p.m.



**NEXT SUNDAY: August 7**  
**Back to Hogwarts Bash**  
5:30 - 8 PM. \$5

Join us in the CLEC for one last hurrah before school starts! We'll have lots of Harry Potter themed fun including food, frozen butterbeer, games and more.

### Students Lead Campers Through Prayer Stations

Throughout the summer our Student Ministry served at our camp on Mondays by helping to lead games and other activities. For their last Monday Serve, they divided the kids into groups and led them through several prayer stations designed to help kids pray in different ways, connect with God, and think about His love and who He is. Follow along in pictures with one of the groups as they visit each station below:

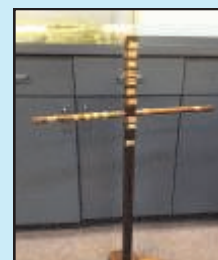


#### Reflections

At this station we asked the kids to look at their reflection while we read Scripture over them telling them what God thinks about them: They are chosen, holy, God's friend, His workmanship...

#### Healing

We prayed for people who need healing. The kids wrote the name of the person they prayer for on a band aid and placed it on the cross pictured at right.

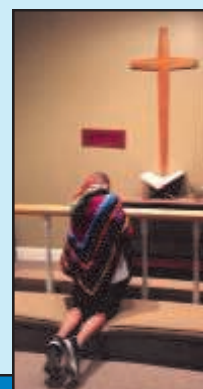


#### The Light of the World

We learned about Jesus as the light of the world and how we, too, can be lights in this dark world. We prayed for friends and family who don't know Jesus.

#### God's Love

In the prayer room we put prayer shawls on the kids' shoulders. We talked about Jesus' love and how he wraps His arms around us. Then we talked about the loving women of our Prayer Shawl Ministry, who took time to make the shawls, praying through every stitch. We prayed and thanked God for His love and the amazing church that is St. Paul.



Visit Facebook for more pictures:  
[SPUMCLighthouse](https://www.facebook.com/SPUMCLighthouse)



**Children** *Infant- 5th Grade, Kaitie Johnson,  
Director of Children's Ministry, Kaitie.j@stpaulumc.org*

**Sunday Morning: Lil' Kidz Care**

Lil' Kidz Care is available every Sunday for infants to 4-year-olds, at 8:45 a.m. in the nursery building (Bldg B) next to the sanctuary. Sign in and be given a pick-up card that you will need to pick-up your child.

Sunday Morning: Preschool & K-5  
Kids ages 3-5 and K-5th grade are invited to join us in the Children's Ministry Center in Bldg C at both 9 and 10:30 a.m. for Children's Worship and age-appropriate lessons.



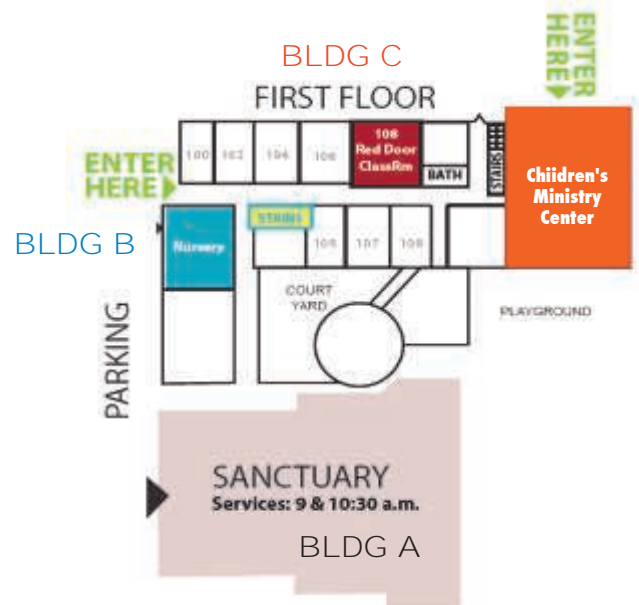
July's Sunday Lesson Series  
Where in the World

Bottom Line: The story of Jesus changes how we work together. We'll finish up our *Where in the World* series with something else that Paul wrote to the church at Ephesus. In **Ephesians 4:4-6, 15b-16**, Paul talked about how we need to work together to accomplish everything that God wants us to do. We can work together using the gifts that God gave us. When we believe in the story of Jesus, life is not just about me anymore. It's about me working with others to help even more people hear and believe that Jesus is who He said He was.

*Our Memory Verse is Ephesians 2:8:  
"God's grace has saved you because of your faith in Christ. Your salvation doesn't come from anything you do. It is God's gift."*



Mark your calendars now for Saturday, September 3! We have a fun night planned for the whole family with food, lots of games and activities and more.



Our Son Kissed Preschool is a caring, faith-based environment where children learn and grow. The preschool offers full and part time programs, year-round for one-year-olds through pre-kindergarten, and includes free lunch. We are a Free VPK and School Readiness provider. For more info call the school at 585-8596.





## The Back to School Jubilee Is This Saturday!

Our Back to School Jubilee is this Saturday, August 6 from 10 a.m. to 2 p.m. We have pre-registered close to 400 children in K-8th grade this year to receive backpacks, school supplies, and other necessities like shoes and socks. Thank you so much to everyone who has donated supplies and volunteered to help. The blue shopping cart has been full each Sunday as you generously helped provide what the children need for the year.

### Drop Off Your Donations

If you still need to drop off your supplies, you can put them in the blue shopping cart in the lobby today or bring them to the church office this week. Please try to get your supplies turned in early this week so we can finish our inventory and sorting.

### If You're Signed Up to Volunteer

Please check the list posted on the school bus in the lobby today for your volunteer assignment. Volunteers on the day of the Jubilee should arrive at 9 a.m. for instructions, unless you're working only the afternoon shift. Children will begin arriving at 10 a.m. If you have any questions about your assignment, contact Pastor Pam at [pam.d@stpaulumc.org](mailto:pam.d@stpaulumc.org) or call the church office.

### Monetary Donations

We still need monetary donations to fund the cost of shoe vouchers so children can get shoes in their correct size. If you would like to make a monetary donation, please place it in the offering today.

### Help on Sunday Mornings

- **Worship Arts Technical Crew**—We have some outstanding volunteers on our Technical Crew, but we are still trying to build a larger team to help behind the scenes during worship. We especially need helpers at 9 a.m. We have jobs for all ages and physical abilities, from running the lyrics on the screen and other behind the scenes jobs. You do not need any technical knowledge or special skills to help out, we will train you!
- **Greeters and Ushers**—Each Sunday our ushers and greeters are some of the first faces people see as they come to worship. We need friendly people to welcome folks as greeters, and to take part in worship as ushers at both worship times.

If you can help in any of these ways one or two Sundays a month, please fill out and turn in a Connect Card or contact our Senior Director of Worship, Laurel Fortuna 584-8165 x216 or email her at [laurel.f@stpaulumc.org](mailto:laurel.f@stpaulumc.org).



### United Methodist Women Rummage Sale

If you have furniture or gently used household items you'd like to donate to the March 2017 Rummage Sale, we will accept donations beginning in August. You can drop items off in the trailer on the north side of the Open Arms building on the 2nd Saturday of each month between 10:00 a.m. and 12:00 p.m. Please wrap all glass items and pack them in a box.

Furniture pick-ups will begin in December. We do not have any men to help us pick up furniture right now, which is why we're making the trailer available for drop offs. If any men are able to help make pick-ups, please let us know by filling out the Connect Card in this bulletin. If you have any questions, you may contact Rita Fowler at 585-0273.



## Coming this Week

### Sunday, July 31

Courtyard Coffee	8:30 AM
Lil' Kidz Nursery	8:30 AM
Traditional Worship	9:00 AM
Children's Worship	9:00 AM
Bereans	10:15 AM
Crusaders	10:15 AM
Friendship	10:15 AM
Inspirations	10:15 AM
Contemporary Worship	10:30 AM
Children's Worship	10:30 AM
Homeless Feeding	3:30 PM
Youth	5:30 PM

### Monday, August 1

Stephen Ministry	6:30 PM
Boy Scouts	7:00 PM

### Tuesday, August 2

Sonrise Men's Study	6:30 AM
JOY (Just Older Youth)	10:30 AM

### Wednesday, August 3

Handicapable	6:15 PM
Volleyball	7:45 PM

### Thursday, August 4

Men's Bible Study	7:00 AM
Prayer Shawl	5:30 PM
Intercessory Prayer	7:00 PM
Choir Rehearsal	7:00 PM
Choir Pot Luck	8:00 PM
AA Meeting	7:00 PM

### Friday, August 5

*Church Office Closed*

### Saturday, August 6

Back to School Jubilee	10:00 AM
------------------------	----------

\*

Due to space not all events are listed here. Visit our website [www.stpaulumc.org](http://www.stpaulumc.org) for our full calendar.

\*

E-mail [church@stpaulumc.org](mailto:church@stpaulumc.org) or call the church office if you have an event to schedule.



## Martha Ministry Spotlight

We're still looking for a few volunteers!

A couple people let us know they were interested in joining Martha Ministry after our July bulletin article requesting help for our June and December team. The teams need a minimum of five or six to be effective so that each member can provide part of a complete meal or two for a family. So if you are able and willing, we could use two or three more volunteers. If you are interested in helping in June and December, fill out the Connect Card in this bulletin and let us know.

If you would like to know a little bit more about how the meals are put together, here is a description of our normal procedures:

- Someone calls the office to request Martha Ministry's help. We check to see if there are any particular food requirements or food allergies, and determine the date the meal is to be delivered.
- The team captain who is on call for that particular month is contacted; she, in turn, calls her team members. The main meat or casserole to be provided is determined, then the sides and dessert can be chosen.
- One person volunteers to bring the main entrée; others on the team volunteer to provide the vegetables, salad, starch and dessert. This is why we need to have five or six members for team, so each team member can supply one part of the meal. One of the members volunteer to deliver the meal(s) to the person in need.

Martha Ministry volunteers provide the food they offer at their own cost. It **does not have to be "fancy," but should be nutritious and meals provided should be "balanced" and healthy.** We do have to keep in mind any food restrictions for salt, sugar or fats when preparing our meals. Home cooked meals are welcomed, but team members can also buy prepared food from a restaurant such as Boston Market, a rotisserie chicken from Publix, etc. Our Martha Ministry members are not asked to provide a whole meal but, working as a team, each member provides something for the meal(s).

Team members are on call two months out of the year so each Martha Ministry team can plan their meal preparations or purchasing of food in advance if they want.

Please let us know if can help serve by calling the church office at 584-8165, e-mailing [church@stpaulumc.org](mailto:church@stpaulumc.org) or filling out your Connect Card. This is a caring ministry that has a big impact on the recipients and is so appreciated during life challenges or changes!

### **A Martha Ministry Helpful Hint:**

*Adding three large stalks of cut-up celery to two cups of beans will make the beans more easily digestible.*

# GOOD NEWS



## Handicapable Ministry Enjoys Annual Trip to the Ballpark

Our Handicapable Ministry had an action-packed Friday evening on July 22 at Brighthouse Field in Clearwater, as almost 150 gathered to watch the Clearwater Threshers play the Ft. Myers Miracle. The highlight of the evening for many was filling up on goodies such as hamburgers, hot dogs, peanuts, chips, soda pop and ice cream sandwiches. All the ladies also received a free tumbler as part of a "Pitch for Pink" campaign for breast cancer awareness. Even the rain that came rolling in around 8 p.m. couldn't dampen spirits. What a great night, and a worthwhile cause!



**More 100 Dresses Thank You's**  
 Several of the seamstresses who made dresses this year were inadvertently left out of last week's bulletin. Here's a note from Kathy Carr with additional thank you's.

*I want to thank Ginny, Judy, Kathy, Rachelle, Marie, Jane, Connie, Faye, Joyce, Lois, Beverly, and Carol for all their hard work! If you would like to sew for us next spring, fill out a Connect Card and I will get in touch with you next year. Thank you all -- you have been such a blessing to me and to the girls who will get to pick out a new dress for school.*

*Blessings to you all, Kathy*



## Students Lead Campers in Prayer

During last week's "Monday Serve," our students led our Camp XP campers through several prayer stations. Visit page 6 for more pictures and information about the stations.

 [SPUMCLighthouse](https://www.facebook.com/SPUMCLighthouse)

The Reverend Bob Martin, Senior Pastor  
 The Reverend Pam Dubov, Minister of Outreach and Missions



Address: 1199 Highland Avenue in Largo, 33770  
 Phone: (727) 584-8165 | Prayer: (727) 559-PRAY  
 Office Hours: 8 a.m.—5 p.m., Monday-Thursday  
 E-mail: [church@stpaulumc.org](mailto:church@stpaulumc.org) | [www.stpaulumc.org](http://www.stpaulumc.org)

