

# WHERE'S GOD?



May 28, 2017

Welcome from Pastor Bob

Whether you're a first time visitor or a member of our St. Paul family, I'm glad you've joined this Sunday! We're starting a new series "Where's God?" There are times when we feel close to God, but others where he feels distant and detached. Sometimes we feel like he's not listening to our prayers, or like we're on our own. Why are there times when our prayers go unanswered? Why are there times when we don't feel God's presence? This series will take a look at some of the difficult questions that sometimes challenge our faith. I hope as this series continues you will find your faith strengthened and renewed as we discover together where God has been the whole time.

You can find out more about our upcoming events in this bulletin or on our website: [www.stpaulumc.org](http://www.stpaulumc.org)

Thank you for being part of the Lord's work here at St. Paul. With God's help, and all of us working together, there is nothing we can't do!



A handwritten signature in black ink that reads "Pastor Bob".

Bob Martin, Senior Pastor

Glorify God ♥ Grow in Faith ♥ Give in Love



# GLORIFY GOD

## TRADITIONAL WORSHIP at 9 AM

- Prelude Aaron Cassette, Accompanist  
 Welcome Pastor Pam Dubov  
 Observance of Memorial Day  
 \*Greet *Oh How He Loves You And Me*  
 \*Call to Worship  
 Leader: For from the rising of the sun to its setting my name will be great among the nations,  
 People: and in every place incense will be offered to my name, and a pure offering.  
 Leader: For my name will be great among the nations,  
 People: says the Lord of hosts. Amen.  
 \*Hymns *Holy, Holy, Holy! Lord God Almighty* No. 64  
           *God, Whose Love Is Reigning o'er Us* No. 100  
 \*Apostle's Creed No. 881  
 Prayer with Lord's Prayer No. 895  
 Scripture Reading: Proverbs 19:21, Romans 8:28 (NIV)  
 Offertory Sanctuary Choir  
 \*Doxology *Praise God, From Whom...* No. 94  
 \*Prayer of Thanksgiving  
 \*Transitional Hymn *It Is Well With My Soul* No. 377  
 Message "When God Seems Inattentive" Pastor Bob Martin  
 Directed Prayer  
 \*Hymn *Trust and Obey* No. 467  
 \*Benediction  
 \*Postlude

\*Please stand, if you are able.

If you need assistance, let an usher know.

Baby changing tables are located in both men and women's restrooms.

9 AM Greeters: Linda Pennington and Dee Rogers

### VISITING US TODAY?

If you're visiting us today, welcome! We hope you find St. Paul a comfortable place to worship and that you feel God's love. To find out more about us we invite you to:



VISIT OUR CONNECTION CENTER

If you have questions or would like to talk to someone about St.



VISIT OUR WEBSITE: [www.stpaulumc.org](http://www.stpaulumc.org)



JOIN OUR MAILING LIST  
SIGN UP ON THE CONNECT CARD



FOLLOW OUR FACEBOOK  
StPaulUMCLargo

### Making a Prayer Request

Write your prayer request on the Connect Card and drop at the Connection Center or in the offering plate. You can call our prayer line at any time: 559-PRAY (7729).

### Hear Our Prayer

Please pray for the people listed below with immediate prayer needs:

Aaron W	Kat Farhangi
Allison Hall	Kayla McKagan
Amanda Swan	Kenneth A.
Anita	Kevin, Heather &
Ariel Kearns	Malachi
Audrey Talbert	Kim Morris
Bill H	Kristi Burslem
Bob & Troy Hartel	Leen M
Bob Russo	Leo
Bobby Quinton	Libby Burke
Bonnie Wismer	Lillyann
Brad Jones	Linda
Brian Greely	Lori, Andy, David,
Bud	Austin & Kathy
Caitlynn Timberlake	Lorraine & Don Piro
Calvin	Magid Mikheel &
Carl Simon	Family
Carol Quinton	Margie Stillwell
Carolyn Goodwin	Mark LaPolla
Chad M	Mark Wagner
Chris	Martha
Cliff Armbruster	Mary Barrett
Coletti Family	Mary Daniels
Dave	Meghan Timberlake
Dave Wertz	Mickey Bishop
David Barrett	Nancy Evans
David Grantges, Sr.	Pastor Pam
Dean Perdue and	Penny McElyea
Family	Peter H
DeYong Family	Ralph Moon
Diane & Mike	Rich Stemboroski
Luttman	Rita
Donna Cordes	RLT
Eric Pitts	Ron
Evelyn Bradley	Ron & Judy Getz
Simonetti Family	Ruth
Frank Register	Samantha
Gilbert Quinn	Shirley
Hank	Shirley Hamrick
Jace Michael	Shirley Register
Jackson	Steve Harvey
Jan Dale	Steve K
Jan Snow	Sue & Jeff Welch
Jane Huter	Tammy & Bruce
Jenny Walter	Thanks to God
Jessie Fowler	Todd Smyzer
Jim Lucky	Tom C.
Jodi Kearns	Travis
John Dibble	Trevor Birt
John Fady	Windell T. White
Josh DeLoach	Zackary Kueker

## 10:30 CONTEMPORARY WORSHIP

A typical contemporary worship at St. Paul lasts about an hour. Worship is filled with current Christian music from our praise band. You are invited to sing along with the words on the screens, or simply enjoy the music. You'll notice there is a time in our worship to give financially. This is how we support the ministries and missions of our church. We hope you experience the love of God with us today!



ABOUT  
60 MIN.



PASSIONATE  
MUSIC



NO  
PRESSURE

### Giving

It's easy to give online! You can make a one time gift or set up a convenient recurring contribution on our website. You can also use our online giving page to pay for things like worship flowers, class study materials and more. Visit [stpaulumc.org](http://stpaulumc.org) and click the Giving button, or use this QR code.



### Flowers

Do you have an event or person you would like to honor with flowers? You can give a flower bouquet to the Glory of God. Call the church office at 584-8165, visit the Giving page on our website, or e-mail [church@stpaulumc.org](mailto:church@stpaulumc.org). Bouquets are \$40. Be sure to include your inscription with your order. Flowers can be donated to hospitals and the homebound, or picked up after 10:30 a.m. worship on Sunday or at the church office during the week.

### Help Us Update Our Military Prayer List

The Military Prayer List is being started from scratch so we can ensure that it is up to date and accurate. If you have someone whose name you would like to add to our Military Prayer List, **or if you would like a name to remain on the list**, please make a note on the Connect Card on this page under "How can we pray for you?" Be sure to check the box labeled "For Military Prayer List." You can also e-mail [church@stpaulumc.org](mailto:church@stpaulumc.org) or call the church office at 584-8165.

## St. Paul United Methodist Church CONNECT CARD

Use this card to record your attendance and share your prayer requests, needs and interests. Tear off and return it in the offering plate, the basket in the lobby, or the Connection Center. You do not need to fill out the entire card, only the parts that apply to you!

Date: May 28, 2017 9 AM 10:30 AM

Name: \_\_\_\_\_

E-mail: \_\_\_\_\_

Phone: \_\_\_\_\_

Address: \_\_\_\_\_

I am a:

- 1st Time Guest       2nd Time Guest  
 Regular Attendee       Member(s)  
 Winter Resident  
 Please update my information.

I came today because:

- I drove by       I visited the website  
 I've been here before       I received a mailing  
 I was invited by \_\_\_\_\_  
 Other: \_\_\_\_\_

I want to join your e-mail list:

- Weekly Pastor's E-Note       Growth Guide  
 Weekly St. Paul Newsletter       Children  
 Students  
 Other: \_\_\_\_\_

Be sure to put your e-mail address at the top of the card!

How can we pray for you?

\_\_\_\_\_

\_\_\_\_\_

\_\_\_\_\_

- For Military Prayer List  
 Do NOT publish in bulletin.  
 Include on prayer chain.  
 I would like to connect with a Stephen Minister.

**Don't forget to fill out the other side!**

# St. Paul United Methodist Church CONNECT CARD

Use this card to record your attendance and share your prayer requests, needs and interests. Tear off and return it in the offering plate, the basket in the lobby, or the Connection Center. You do not need to fill out the entire card, only the parts that apply to you!

I am interested in:

- Rededicating my life to Jesus
- Being baptized
- Becoming a member
- Joining a Small Group
- Serving at the church

How: \_\_\_\_\_

- Serving in the community

How: \_\_\_\_\_

- Learning more about St. Paul ministries

Specifically: \_\_\_\_\_

Other: \_\_\_\_\_

I need a name tag for:

(Name tags can be picked up in the Connection Center to the side of the lobby two weeks after your request is placed.)

---



---

I would like to help with:

- 9:00 a.m. Sunday Usher
- 10:30 a.m. Sunday Greeter
- Livestreaming at  9 a.m.  10:30 a.m.
- Sunday Hospitality/Refreshments
- Church Auction  Chairperson  Other Help
- Connection Center Host
  - 8:30–9:05 a.m.  10-10:35 a.m.
  - 11:30-11:45 a.m.

I will attend:

- Discover St. Paul on June 11–11:45 a.m.

Remember to fill out the other side with your name and contact info!

**Don't forget to fill out the other side!**

# NEXT STEPS

Want to know more about St. Paul, meet new people, or get more involved? TAKE THE NEXT STEP!



## CONNECTION CENTER

Our Connection Center is located in the room to the side of the sanctuary. Stop by if you have any questions, need information, or would like to speak to someone about St. Paul.

## DISCOVER ST. PAUL

Discover St. Paul is an informal coffee with the pastor to give you a chance to ask any questions you may have and discover more about who we are as a church, our mission, and core values. The next Discover St. Paul coffee is on June 11 at 11:45 a.m. in the Connection Center. Please use the Connect Card to RSVP.



## STARTING POINT CLASS

This four week class covers basics of our faith. For anyone who is new to attending church or is coming back to church.



## ONGOING GROUPS

- Age level groups (ex. JOY, IGNITE)
- Source Groups (Small groups of twelve or less)
- Sunday School
- At 9:15 and 10:15 a.m.



## SHORT TERM GROUPS

- Topical classes covering things like
  - ⇒ Finance
  - ⇒ Parenting
  - ⇒ Caretaking
- Topical and seasonal Bible studies and

VISIT OUR WEBSITE

**WWW.STPAULUMC.ORG**

for more information about our ministries.



# GROW IN FAITH

## Adult Studies

### Adult Sunday Morning Classes

Adults of any age are invited to join one of our Sunday school classes:

9:15 a.m. Sunday school class

Room 202 in **Bldg C**

10:15 a.m. Sunday school classes

**Inspirations** - Purple Door Classroom (101) in **Bldg C**

**Bereans** - Conference Room 2 in **Bldg B**

**Friendship**—Room 201 (Community Room) - **CLEC**

### JOY (Just Older Youth)

Older adults are invited to join us at 10:30 a.m. on Tuesdays for worship, study and fellowship in the Lu-Anne Willey Fellowship Hall (CLEC). This Tuesday, May 30, Jan Snow will teach. Bring a lunch and eat together after worship. Beverages are provided by the church. For more information, contact Senior Director of Ministry, Bobby Van Duyne at 584-8165 or email [bobby.v@stpaulumc.org](mailto:bobby.v@stpaulumc.org).

### Soaring Eagles

Saturdays 8:00 a.m. | Room 201 (CLEC)

Men are invited to Saturday morning fellowship, prayer and devotions at 8 a.m.



## IGNITE: Young Adults & Young Professionals

Join IGNITE at 7 p.m. tonight in room 202 of the Christian Life Enrichment Center. They are continuing their study, "Explore the Resurrection," which looks at historical support for the truth of the resurrection. Follow IGNITE on Facebook for info on current and upcoming studies, events, and cancellations. To receive scheduling notes by text, email [youngadults.stpaulumc@gmail.com](mailto:youngadults.stpaulumc@gmail.com) with the phone number where you would like to receive texts.



## smallgroups

Small Groups at St. Paul are formed by up to twelve people who meet to support each other in their faith journey and to "do life together." The groups meet regularly to:

- **Grow** in their personal relationship with God.
- **Connect** with other believers through worship, study, prayer, praise and service.
- **Support** each person in their faith walk.
- **Be the hands and feet of Jesus** by serving within their group, church and community.
- **Enjoy fun and fellowship together.**

If you would like to be part of a Small Group and forge a bond with other believers fill out the Connect Card on page 4 or contact Senior Director of Ministry Bobby Van Duyne at [bobby.v@stpaulumc.org](mailto:bobby.v@stpaulumc.org).



### Discover St. Paul Coffee

If you're new to St. Paul, thinking about joining, or just want to get connected with our missions and ministry, we invite you to join us for coffee after the 10:30 a.m. worship. Meet in the Connection Center on June 11 at 11:45 a.m. for coffee and snacks and the chance to meet some new people and ask any questions you may have. Let us know you plan to attend by filling out the Connect Card on page 4.

### Prayer Shawl Ministry on Summer Hiatus

The Prayer Shawl Ministry is on their summer break. They will resume meeting every other Thursday starting August 17 at 5 p.m. in room 243 of the Christian Life Enrichment Center.



## Student Ministry

6th-12th Grade

Alison Van Duyn, Student Ministry Director, [alison.v@stpaulumc.org](mailto:alison.v@stpaulumc.org)

 SPUMCLighthouse

Sunday Youth Group



*When Jesus talked about Himself, He would make statements like, "I am the Good Shepherd" and, "I am the bread of life." As strange as they sound, these statements give us a better picture of who Jesus is. Because if He is a shepherd, then we are His sheep. And if He is the bread of life, then we can be satisfied in Him. In this series, we'll discover that the way Jesus described Himself, gives us a clue into who we are as well.*

TONIGHT

If He is Who He says, then I will follow His lead

If someone asked you to picture Jesus in your mind, what would He look like to you? No matter how you see Him, chances are the image you have of Jesus probably comes from a lot of places—things you've heard, stories you've read, or pictures you've seen depicting Him. While those images may have some truth to them, they're not always completely accurate. And sometimes they leave us wondering if who Jesus really is lives up to all the hype. The good news is that Jesus didn't leave us guessing who He is. Instead, He gave us the next best thing to actually knowing Him on Earth—His words and actions. As we look this week at some of the things Jesus said about Himself in the Bible, we'll not only get a better picture of who He is, but also discover that who He is, is worth following.

Students are invited to join us in the Mariposa Cafe for dinner at 5:30 p.m. followed by group games, exciting crowd breakers, passionate worship, biblical teaching, and a chance to connect with others through Source Groups. Dinner is \$3. Register in advance on our website. Time together ends at 8 p.m.



## Summer Xplosion

Start the summer with a whole week PACKED with fun events to get students excited about summer and about Jesus.

### SUNDAY, JUNE 4: KICK-OFF

5:30-8 p.m. Dinner is \$3

Join us for Student Worship with lots of games and music.

### MONDAY, JUNE 5

#### PHOTO SCAVENGER HUNT

6-9 p.m. \$5

Prizes will be awarded to the top 3 teams!

### TUESDAY, JUNE 6

#### TAMPA BAY RAYS GAME

Meet at 6 p.m. at the church.

\$15 and hot dogs are \$2 on Tuesdays!

You can bring in sealed water bottles and snacks to the game.

### THURSDAY, JUNE 8

#### MESSY OLYMPICS

6:30-9 p.m. \$3

Join us in the field by Open Arms on the NE corner of Highland/Rosery. Dress to get messy!

### FRIDAY, JUNE 9

#### LOCK IN/LOCK OUT

7:30 p.m.- 8 a.m. on Saturday, June 10. \$20

Bowling, Broom Hockey, Games at Church

Eat before you come, snacks and drinks provided back at church, breakfast provided in the morning. You can bring extra money for snacks/drinks at bowling or broom hockey.



**Children** *Infant- 5th Grade, Kaitie Johnson,  
Director of Children's Ministry, Kaitie.j@stpaulumc.org*

**Sunday Morning: Lil' Kidz Care**

Lil' Kidz Nursery Care is available today for infants to 4-year-olds, at 8:45 a.m. in the nursery building (Bldg B) next to the sanctuary. Sign in and you will be given a card that you will need to pick-up your child.

**This Sunday: Preschool & K-5**

Preschool and K-5 are invited to attend their own worship and lessons in the Children's Ministry Center in Bldg C at both 9 and 10:30 a.m.

Today we're learning to keep going because God knows the end of the story. This week we are talking about John's vision of the New Heaven and New Earth. Through Jesus, we have the opportunity to spend forever with God in a world where there is no sadness or pain. Showing determination in the face of difficult situations is never easy, but because of Jesus we have a hope that God will make all things new. God knows the end of the story, and we can trust Him no matter what.



**GEAR UP FOR A SUMMER OF FAITH & FUN!**

- GAMES & SPORTS**
- CRAFTS**
- FIELD TRIPS**
- MUSIC**
- DRESS UP FRIDAYS**

**MAY 30-AUGUST 4**  
**AGES: K-5**

**CAMP HOURS: 7 AM-6 PM**  
**LUNCH & SNACKS INCLUDED**  
**COST: \$80-\$100/WEEK**

**Pay only for the weeks your child attends**

**REGISTER NOW**  
**STPAULUMC.ORG**



# GROW IN FAITH

## STRATEGIC INITIATIVES

Our strategic initiatives are goals we can't meet without God's help and the guiding purpose for our church over the next 5 years



### STRATEGIC INITIATIVE #1

**INTRODUCE JESUS TO 20,000 PEOPLE IN A 5 MILE RADIUS OF OUR CHURCH, SO THAT THEY EXPERIENCE AND SHARE HIM.**



### STRATEGIC INITIATIVE #2

**FOLLOW JESUS' LEAD TO REACH OUT TO THOSE EXPERIENCING POVERTY AND STRIVE TO REVERSE ITS EFFECTS ON OUR COMMUNITY**

WE'RE NOW ON  
**Instagram**



[stpaulumclargo](https://www.instagram.com/stpaulumclargo/)

Don't forget, we are on twitter and facebook as [stpaulumclargo](https://www.facebook.com/stpaulumclargo/) so you can keep up with us on your favorite platform.

## Not Receiving St. Paul's E-mails?

If you've asked to be added to one of St. Paul's mailing lists, but aren't receiving your e-mails, be sure to check your spam or your "promotions" folder if you have gmail. Sometimes our e-mails are filed into these folders, where you may not see them. You can move them by right clicking on the e-mail and moving it to the Inbox tab. If you still don't see the e-mails you should be receiving, send us a note at [church@stpaulumc.org](mailto:church@stpaulumc.org) so we can look into it for you.

## GROWTHguide

The Growth Guide is a weekly e-mail with devotionals based on Sunday's message. Scripture, challenge questions, and more take you deeper into the topic and help you keep in touch with the Lord all week long. If you would like to receive the Growth Guide, you can sign up on the Connect Card on page 3 of this bulletin.



## Watch or Listen to Past Messages

Our past messages are available as both video and audio. If you want to listen to a message while driving or working out, you can get our past messages free on iTunes. Download the messages you missed, or the ones you want to hear again and listen anywhere you listen to music! Visit [stpaulumc.org](http://stpaulumc.org) and click the podcast link, or go to the iTunes store and search for St. Paul UMC.

## Employment Opportunity

We are looking for a full time Assistant Director for Son Kissed Preschool who is passionate about early childhood education. Hours are weekdays 9 a.m. to 6 p.m. It is preferred that applicants have completed their 45 hours and will have up to date CDA or FCCPC, CPR trainings and First Aid. We are seeking someone who has positive communication skills; with strengths in spoken & written communication.

Visit the employment section of our website for the full list of requirements: [www.stpaulumc.org](http://www.stpaulumc.org)



## Coming this Week

### Sunday, May 28

Courtyard Coffee	8:30 AM
<b>Lil' Kidz Nursery</b>	8:30 AM
Traditional Worship	9:00 AM
Children's Worship	9:00 AM
Sunday School	9:15 AM
Bereans	10:15 AM
Friendship	10:15 AM
Inspirations	10:15 AM
Contemporary Worship	10:30 AM
Children's Worship	10:30 AM
Homeless Meal	3:30 PM
Student Ministry	5:30 PM
IGNITE	7:00 PM

### Monday, May 29

*Church Office and  
Son Kissed Preschool Closed for  
Memorial Day*

### Tuesday, May 30

<b>Sonrise Men's Study</b>	6:30 AM
Summer Camp Begins	7:00 AM
Toy Making	8:00 AM
JOY (Just Older Youth)	10:30 AM
GriefShare	1:00 PM

### Wednesday, May 31

Summer Camp	7:00 AM
Toy Making	8:00 AM
Handicapable	6:15 PM

### Thursday, June 1

Summer Camp	7:00 AM
Men's Bible Study	7:00 AM
Toy Making	8:00 AM
Handbells Rehearsal	5:30 PM
Choir Rehearsal	7:00 PM
Choir Social	8:00 PM
AA Meeting	7:00 PM

### Friday, June 2

*Church Office Closed*

Summer Camp	7:00 AM
-------------	---------

### Saturday, June 3

Soaring Eagles	8:00 AM
Basketball	8:00 AM
Toy Making	9:00 AM

\*

If you have an event to schedule,  
contact us at 584-8165 or e-mail  
kerry.k@stpaulumc.org

# GIVE IN LOVE

## 100 Dresses Project

**Calling all seamstresses! It's time to make the T-shirt dresses to hand out at this year's Back to School Jubilee!** We supply the fabric and the t-shirts. You supply the thread and your sewing skills!

If you would like to help us send our Open Arms girls off to school this year with a new dress, contact Kathy Carr at 781-8195 or [rmckwc@gmail.com](mailto:rmckwc@gmail.com). You can also stop by at the 100 Dresses Project table in the courtyard next Sunday, June 4, between worship times and Kathy will answer questions. You'll be able to look at a sample dress and take a packet home to get started!



## Donate to the Project

Our project is funded by the generous donations of our congregation. Each dress costs around \$5 to make. If you would like to donate to the 100 Dresses Project, visit the table in the courtyard on June 4, or put a gift in offering plate in an envelope labeled 100 Dresses Project. Gifts of any size are welcome!

## Make Toys with The Carpenter's Shop Ministry this Saturday

If you would like to help make toys that first responders will give to children in traumatic situations, we invite you to The Carpenter's Shop behind the Open Arms Resource Center for a Saturday work day this week from 9 a.m. to noon. You are also welcome to join the Carpenter's Shop at their regular work times on Tuesdays, Wednesdays, and Thursdays from 8 a.m. to noon.

## Donate Items for Summer Camp

Thank you so much to everyone who has already donated items for our summer camp! We are covered on snacks thanks to your generosity! We are still in need of some craft items as well as games and sports balls. Gently used balls and board games are fine, but please only donate board games that have all their pieces. Check the list below for things we can still use. If you'd like to donate, drop labeled items off in the Connection Center on Sundays or at the church office during the week.

Toys: Sports balls (ex. basketballs etc.), Board games (gently used is ok)  
Art Supplies: markers, crayons, color paper, iron fuse beads (ex. Perler beads)  
Other: sandwich size ziplock bags, plastic or paper cups, coffee filters

## Church Auction Chairperson Needed

**We are looking for someone to lead this year's church auction, which will be held in October.** Have you ever worked on an auction? Do you like working with an energetic group of people? Are you organized? If so, we need you! If you would like to lead the church auction, or help in another way, please contact Arch Johnston at the church office at [arch.j@stpaulumc.org](mailto:arch.j@stpaulumc.org), call 584-8165 x245, or fill out the Connect Card.

# GOOD NEWS



Chief Undestad with some of SKP kids and book they made

## Preschoolers Thank Chief Undestad

Chief Undestad is Son Kissed Preschool's "Officer Friendly." He visits the kids and reads to them, but he doesn't just read—he interacts throughout the book, and our students think he is the funniest guy around. For Police Week, the kids made a book to thank Chief Undestad, and after he read it everyone shared donuts together. We want to thank Chief Undestad, the Largo Police Department and the Early Learning Coalition of Pinellas County for all they have done!

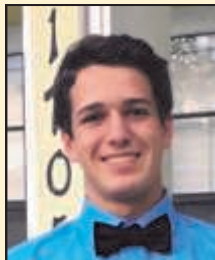
Chief Undestad, the Largo Police Department and the Early Learning Coalition of Pinellas County for all they have done!



## New Website is Coming

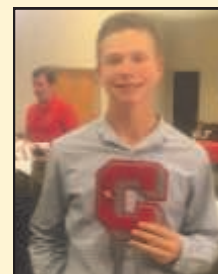
Our website is being redesigned and will go live in June. Although it will have a different look, you will still be able to use it to livestream on Sundays, to watch and listen to past messages, to find information about upcoming events and about our ministries, and everything that you used the old website for. The new design will make it easier for you and for new visitors to find what you're looking for and to connect with St. Paul. We're excited to share it with you in June!

## Student Good News



Braeden Johnson is being recognized for Academic Excellence at Osceola High School. He has a 4.4 GPA!

James White received a letter in baseball at Osceola High School.



Kyleigh Dunn was elected the Student Government Treasurer for Clearwater High School.

Angelena Napolitano got the highest GPA in math for 7th grade.



Dominic Napolitano got an award for most diligent in math for the entire sophomore class.

Eli Kenney was selected for All County Band from Osceola Middle School.

The Reverend Bob Martin, Senior Pastor  
The Reverend Pam Dubov, Minister of Outreach and Missions



Address: 1199 Highland Avenue in Largo, 33770  
Phone: (727) 584-8165 | Prayer: (727) 559-PRAY  
Office Hours: 9 a.m.—5 p.m., Monday-Thursday  
E-mail: church@stpaulumc.org | www.stpaulumc.org

