

**HAVE FUN
BE SAFE
BE ACTIVE**

SOYI

School's Out, Y's In

Our program features:

SOYI School's Out. Y's In— Join the fun at the Y when school takes a holiday or snow day! Activities, games, crafts and gym time at our location. Keep kids engaged when school is not in session.

*Breakfast and snacks are provided.

*Must bring a sack lunch.

*SOYI is at the Portage YMCA.

| MEMBER | NON-MEMBER |
|--------|------------|
|--------|------------|

| | |
|------|------|
| \$20 | \$30 |
|------|------|



CHILD CARE PROGRAMS

With so many demands on today's families, the Y is here to provide support. We offer a safe and supervised place for you kids to be when you are not be able to be with them before school. Kids will discover an environment of our Core Values: caring, honesty, respect, responsibility and faith. We encourage your kids to study and have fun, while meeting new friends.



PORTAGE TOWNSHIP YMCA
3100 Willowcreek Rd.
Portage, IN 46368
219-762-9622

www.ymcaofportage.org

12/2014



**FOR YOUTH DEVELOPMENT®
FOR HEALTHY LIVING
FOR SOCIAL RESPONSIBILITY**

NURTURING POTENTIAL EVERYDAY

SCHOOL AGE CHILD CARE PROGRAMS AT THE Y

- Y-CARE (BEFORE & AFTER SCHOOL)
- SCHOOL'S OUT Y'S IN



FUN FOR THEM PEACE OF MIND FOR YOU

Y-CARE

Before and After School Care

K-8 grade students

Two locations:

- **Aylesworth Elementary**
Serving Aylesworth, Willowcreek,
Central & Myers
- **Jones Elementary**
Serving Jones, Crisman & Kyle



The Portage YMCA has been involved in child care for over 20 years. Y—Care kids explore and develop their interests and talents in our Before and After School Care program. With a focus on safety,

health, social growth, and academic achievement, kids discover who they are and what they can achieve. Children can be dropped off at our secure, affordable childcare as early as 6:30 am and stay after school till 6:00 pm. For many working parents, this is a growing need. Transportation to Y Care locations is provided by the Portage Township School Corporation.



COSTS FOR Y-CARE

Registration fee \$30. Offered when school is in session. Fees are non-transferable or refundable.

BEFORE & AFTER SCHOOL CARE

| WEEKLY RATES | MEMBER | NON-MEMBER |
|--------------|--------|------------|
| AM&PM** | \$58 | \$83 |
| AM ONLY** | \$31 | \$56 |
| PM ONLY** | \$42 | \$67 |

Financial Assistance is available to qualifying families in accordance with the FSSA Gross Income Determination Fee Schedule. Financial Assistance applications are available at the Welcome Center, Online, or by contacting **Ashley Otero at: schoolage@ymcaofportage.org

CCDF Accepted



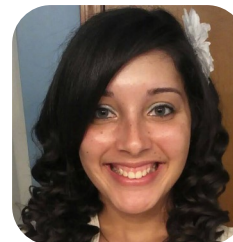
FOR ADDITIONAL SCHOOL-AGE CARE INFORMATION:

CONTACT ASHLEY OTERO

P 219.762.9622

F 219.762.2012

E SchoolAge@ymcaofportage.org



UPCOMING EVENTS & PROGRAMS



August 26th
September 23rd
November 18th
December 16rd

Ages 4-12
\$25/child, per class

LOVE TO LEARN We Do Lego ®



Kids discover how to build, program and create Lego models that move!

Ages 7+ 6pm Tu/Th

Fall I Session: September 11 - October 29
Fall II Session: October 30 - December 23

| PROGRAM FEES | |
|--------------|------------|
| MEMBER | NON-MEMBER |
| \$35 | \$50 |

PARENT'S NIGHT OUT

**Fun For You.
Fun For Them.**



Make a date and let us watch your children the 2nd and 4th Saturday of every month.

Time: 6:15pm-9:30pm

Ages: 6 months-10 years

Fees: \$10/child for Y Members

\$20/child for Non-Members

For additional information about **We Do Lego** contact Noland Belt: stem@ymcaofportage.org
For additional information about **Cocoa & Canvas** or **PNO**, contact CC Cayetano: Ms.CC@ymcaofportage.org