

Grounded in Gratitude...  
 Revealed in Prayer...  
 Lived in Faith

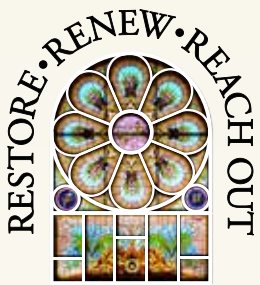


Chelsea First  
 United Methodist Church

**SANCTUARY RENOVATION  
 CAPITAL CAMPAIGN**



# RESTORE, RENEW, REACH OUT



Dear Friends,

In the brutal winter of 1899, the little wooden church on Park Street in the small village of Chelsea, Michigan, burned to the ground. The building was just 40 years old and the people of the congregation were blessed to be worshipping and growing in the church. We imagine conversations of the time. “What shall we do? How can we ever restore our building? What is God wanting us to do?”

By seeking answers to prayer, stepping out in faith, and responding with gratitude, the little congregation built the marvelous stone edifice that stands today as our sanctuary and narthex. The structure was built in an amazing 13 months, and paid off at the first worship service in the new sanctuary in February, 1900.

Now, as we emerge from the brutal winter of 2014, our beautiful sanctuary is showing its age. Much thought, prayer, and visioning has gone into our RESTORE, RENEW, REACH OUT capital campaign to raise funding over three years to renew our sanctuary—its stained glass windows, curved pews, chancel area, and organ—so that God’s vision for our future may be our vision, and may come to fruition.

We believe that the time is right, after more than three years of study, for this project to unfold. We believe that God has called us to be in this place, at this time, with this mission. We believe that we have been blessed with so much, we can be generous and help fulfill God’s mission in our community, our state, and our world.

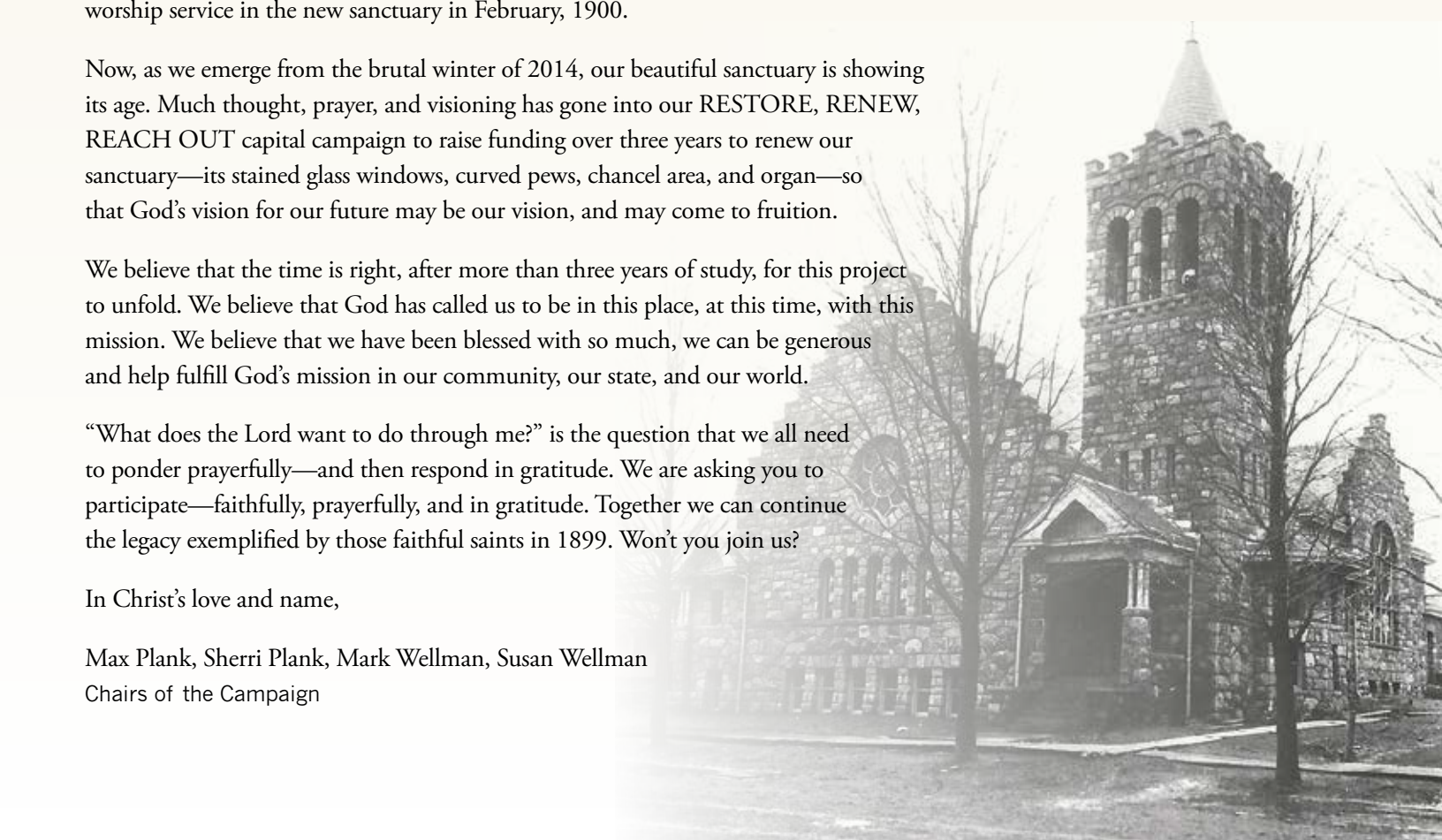
“What does the Lord want to do through me?” is the question that we all need to ponder prayerfully—and then respond in gratitude. We are asking you to participate—faithfully, prayerfully, and in gratitude. Together we can continue the legacy exemplified by those faithful saints in 1899. Won’t you join us?

In Christ’s love and name,

Max Plank, Sherri Plank, Mark Wellman, Susan Wellman  
Chairs of the Campaign



In 1954, pews were repositioned to form a center aisle. New woodwork separated the chancel area.





# GROUNDING in GRATITUDE

## Church History

**1859** Our church was first organized as the Methodist Episcopal Church of Chelsea in 1853 and served by traveling clergy. By 1859, a congregation of just 50 members raised \$8,000 and built a wooden structure on the current church site. After the Civil War (in 1866) a parsonage was constructed next door.

**1899-1900** The wooden church burned to the ground in 1899. Our stone church that stands today was built by the members for \$16,000 and dedicated just 13 months later. The chancel area was originally built open and barrier-free, with choir chairs facing the sides. The pews spanned across without a center aisle.

**1939-1945** Membership had grown to over 300 persons by 1939. World War II disrupted the lives of the people of Chelsea and of the church. Nonetheless, in 1945, before the war ended, the church was rededicated after extensive repairs and improvements that cost over \$6,000—quite a sum for the times.

**1953–1959** A new chancel area was dedicated as part the church's centennial celebration. Extensive repairs were made to the church building. The interior was redecorated. Growth of the congregation during the baby boom spurred conversations about staying or moving to a new site. The congregation decided to stay in the heart of Chelsea, and plans were developed for adding the Christian education space. In just three days, the congregation pledged \$70,000 for the addition.

**1980's–1990's** Growth of the church once again brought the decision to stay in downtown Chelsea. In 1981, our worship was enhanced with a new Zimmer Organ. The bell tower was rebuilt 1985-1988. In 1992, construction began on the main entrance, elevator, coatroom and restrooms. Upon completion, the congregation was blessed with a large gift from the Mildred Grams estate that helped pay off the construction. Growth and energy of the congregation gave momentum to build the Shairer Wing, including Grams Hall, dedicated in 1996.

1981 Zimmer Organ installation



**2006** The "Burn the Mortgage" campaign payed off remaining construction debt. \$652,000 was raised in less than six months.

**2014** Our sanctuary is in need of renovations. Previous generations have made this beautiful space available for us. It is up to us to preserve and renew this space for the generations to follow.

## Why Now?

As you enter the sanctuary, a first glance gives the impression this place was built with care, attention to detail and hints of the beliefs and faith of those who created this sacred space. While pushing your uncle's wheelchair across the rippled and faded carpet, you look for a place he can sit, and hope he can stay through the entire service due to the heat of this late spring day. As you sit two rows up, your knees hit the hymnal rack while sliding across the pew to allow room for your wife and aunt. You arrived too late for a good view of your children sitting up front, eagerly waiting to share the new music they just learned. Seated, you look at the beautiful stained glass but notice cracks and a window that looks like it is ready to fall out. Above, you see cracks in the plaster and notice the great detailed arches are hidden under faded paint and dust. In your head, you hear your mother's comments of her difficulty in reading the program in the poor lighting at last night's concert in the sanctuary. Up front a choir member struggles to snake between chairs, communion table, pulpit, alter and organ console to get to a seat in back of the chancel. The pastor holds a microphone—head set no longer working—and announces the organ isn't working today so the music director will play the piano instead. You see the neighbors you invited and wonder what their thoughts are of the church, knowing they are looking for a worship place to call home. You know something must be done.



2013 Christmas Pageant





# RESTORE and RENEW

## Project Plan

**CHANCEL and ORGAN** The current chancel is multi-leveled, making it challenging to use for today's growing demands of flexibility and accessibility. The proposed plan would create a large, single-level platform that can easily accommodate movement of furniture, musical instruments and worship leaders. The existing pulpit and lectern would be adapted to include casters for easy movement. Proposed improvements for the existing organ include: repair and restoration of pipes, addition of voices, and a new console on casters that can be easily moved on the new chancel floor, and multiple plug-in connections.

**ACCESSIBILITY** Mobility in and around the sanctuary can be difficult at times, even for able-bodied individuals. With the planned renovation there will be a dedicated emergency exit path, as well as easy access to the chancel and choir space, that provides barrier-free accessibility. Barrier-free seating positions are planned for various locations within the sanctuary. Pews will be re-spaced allowing for ease of movement in the pew and from the aisle.

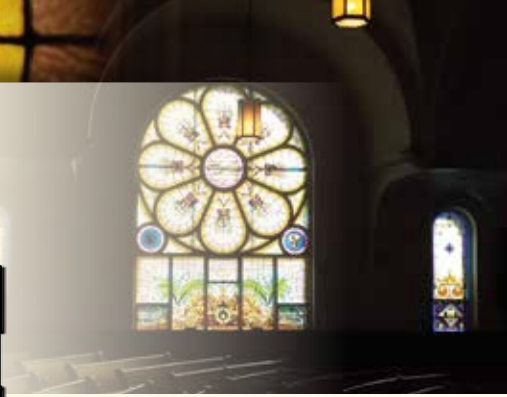
**SANCTUARY-NARTHEX** The interior of the church is currently comprised of the Sanctuary south end, and the Narthex north end. The dividing element between the two is the high wall, which includes three large wooden, pull-down doors and two wood columns. The renovation would eliminate this barrier and provide for better sound transmission to the rear of the church, a visual integration of the sanctuary and narthex, and better sight lines to the chancel.

**STAINED GLASS** The existing stained glass windows will be evaluated and restored according to an overall master plan. The removal and replacement of the exterior protective coverings is also a part of the window restoration project. A clear tempered glass in new frames will be installed. Preserving these historic stained glass windows will ensure their enduring beauty for many years to come.

**FINISHES** Much of the sanctuary renovation will require that the existing finishes be either restored or renewed. The new chancel floor will be a hard surface flooring material. The existing hardwood floors beneath the pews will be refinished and the carpeted areas will receive a new carpet. Due to necessary plaster repairs and the age of the wall and ceiling paint finishes, the entire sanctuary will be repainted, once all repair work is complete. The new color scheme will provide an harmonious blend with the flooring, fixtures, wood finishes, and windows, while also enhancing and highlighting the beautiful architectural detailing found in the church. The existing pews will be refinished and refurbished, including structural upgrades where required. New pew cushions will also be included.

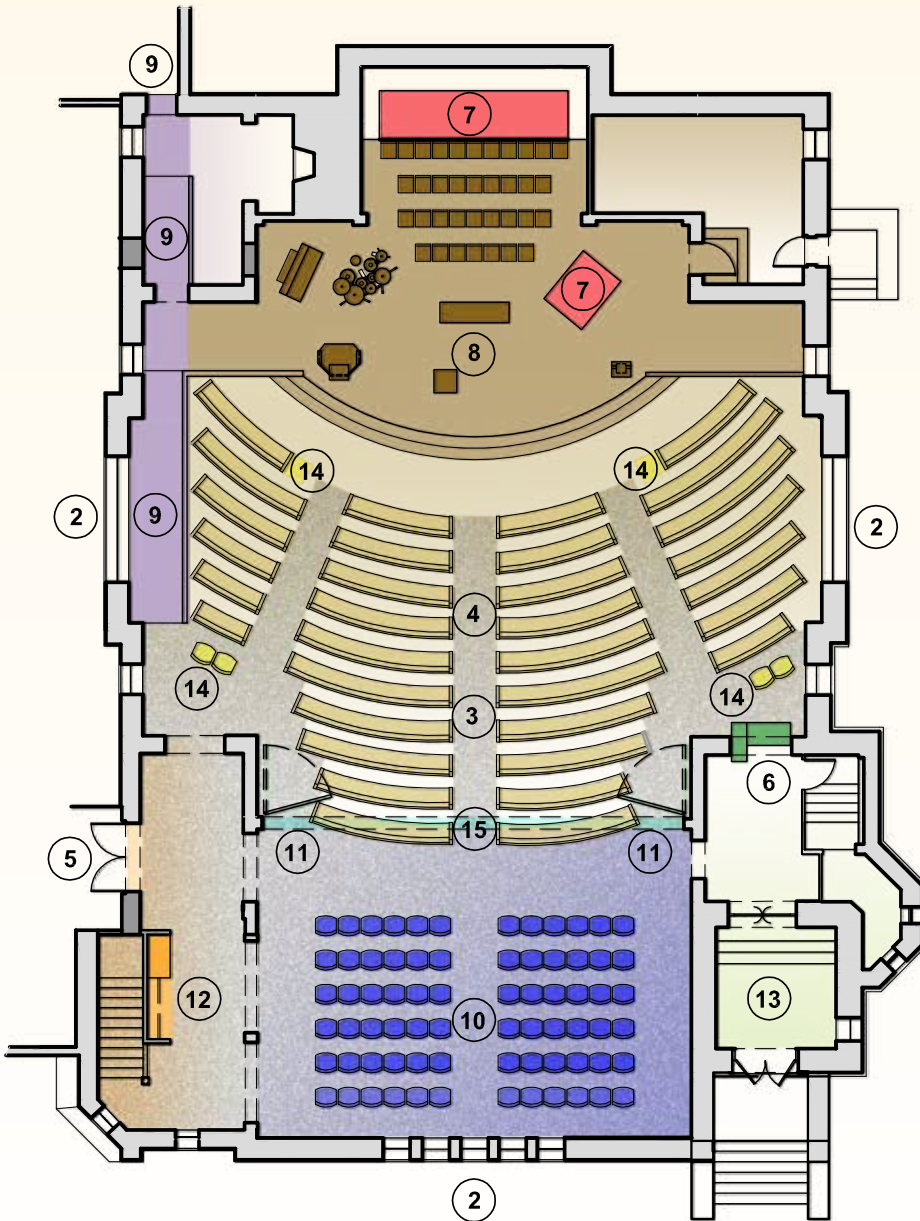
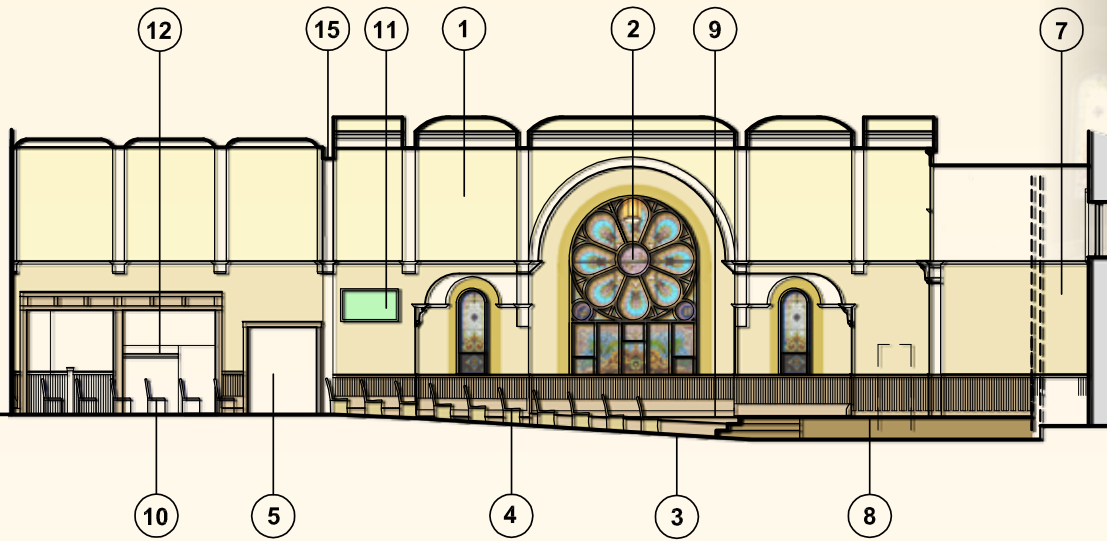
**FUNCTIONAL UPGRADES** Improvements to the lighting and the sound system are included in the sanctuary renovation. These improvements include enhancing the architectural details with focused light, and adding light fixtures in the sanctuary and narthex to provide a brighter and more inviting atmosphere for worship. Lighting controls would also be installed to adequately set light levels according to the need within the sanctuary/narthex. Code compliance for safety would include the addition of emergency lighting, and upgrading and adding exit signs where required. The sound system would be upgraded and the sound control booth would be relocated to a more appropriate area. There will be a need to reposition portions of the heat distribution system, especially where ramp access and floor level changes will occur. The addition of air conditioning is also planned to allow year-round use of the sanctuary. Attic insulation will be added to ensure that energy conservation and heating/cooling dollars are being appropriately expended.





^ Current east side of sanctuary

< Plan for east side of sanctuary



### KEY NOTES

1. Plaster repair and painting of all walls and ceilings
2. Restoration of stained glass windows and new protective exterior glass
3. Install new carpet and refinish hardwood floors
4. Repair, re-space and restore curved wooden pews including pew cushions
5. Widen entry into the sanctuary from the lobby stairs to allow for two-way traffic
6. Provide improved lighting and sound systems
7. Repair and restoration of organ pipes, replacement of organ console
8. Enhancement of chancel space to provide flexibility and barrier-free access
9. Provide accessible egress for emergency exit
10. Provide new flexible seating in narthex space
11. Add large monitors for better viewing from narthex
12. Provide built-in coat storage and usher storage next to existing stair to lower level
13. Remove items stored in west entry/exit so doors can be more easily used
14. Provide flexible/wheelchair seating within the sanctuary pew space.
15. Remove plaster and wood screen wall currently separating sanctuary and narthex
  - Add insulation to ceilings via the attic
  - Install air conditioning for year-round use of this sacred space



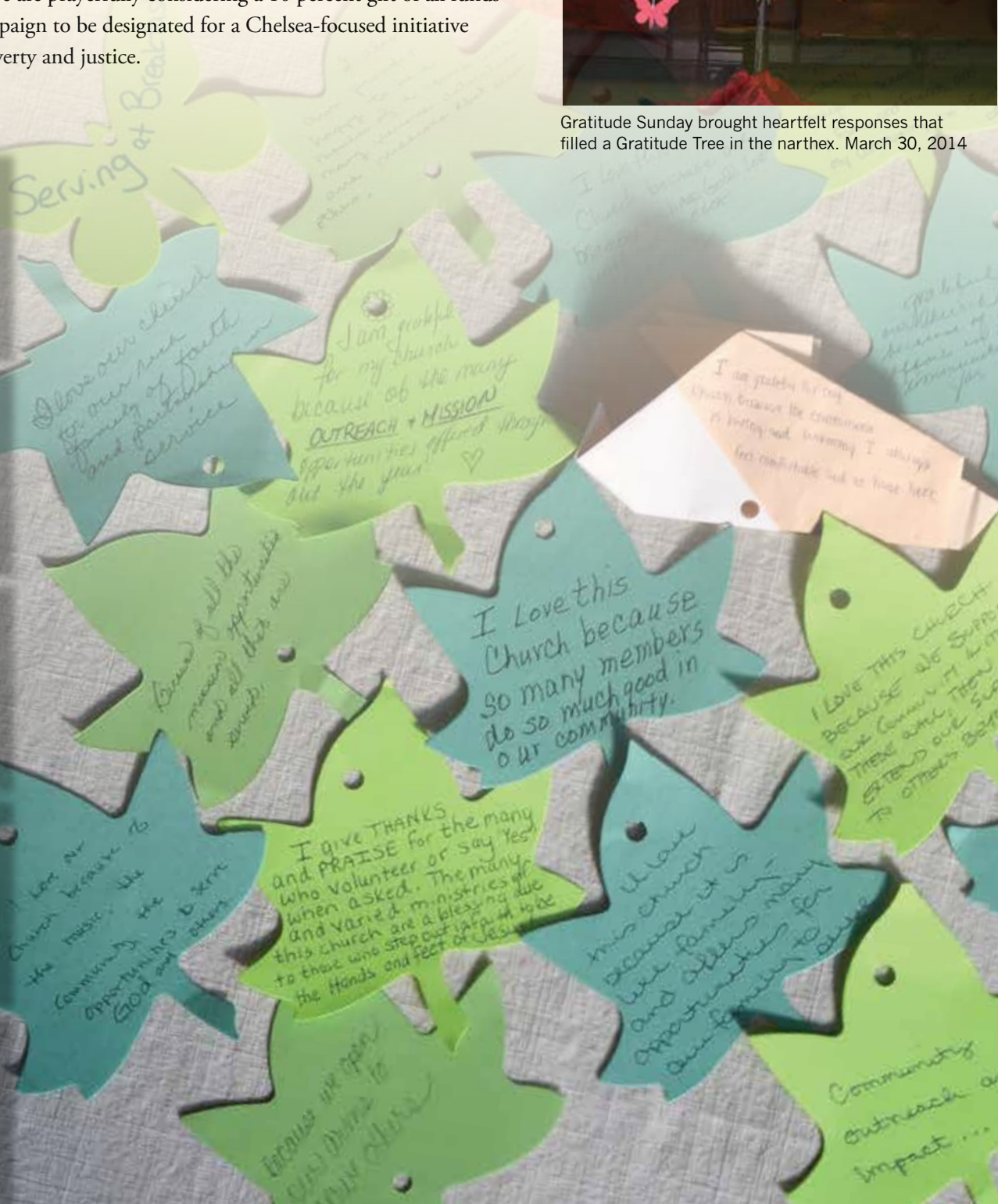
# REACH OUT

We are all about sharing the love of God and helping others experience the life-changing power of Jesus Christ. We expect that our sanctuary renovations will make clear that all are welcome; that worship is the work of all the people of God; and that God is calling each of us to vibrant ministry for today and the future. When our congregation made the decision many years ago to remain at its downtown location, we committed to be a church not only in the community, but for the community. We show our love for God as we reach out to others.

It is in this spirit that we are prayerfully considering a 10 percent gift of all funds raised through the campaign to be designated for a Chelsea-focused initiative addressing issues of poverty and justice.



Gratitude Sunday brought heartfelt responses that filled a Gratitude Tree in the narthex. March 30, 2014



# Lord, what do You want to do through me?

Dear Brothers and Sisters in Christ,

Our mission as the people of Chelsea First United Methodist Church is to inspire and equip ordinary people to live differently because of the love of Christ.

Worship is central to who we are. In worship we recount the narratives of God's mercy and we repent of our failure to extend God's mercy toward others. In worship we give thanks for the forgiveness and blessings we receive and we offer praise for God's unending goodness. In worship we open ourselves to the touch of God's hand, shaping us into the people God calls us to be. This happens through the sharing of scripture, song, prayers, drama, sermons, and inspiring testimonies from "folks like us."

As we move forward in our sanctuary renovation capital campaign, we ask: how will these changes help our mission? We are clear that Jesus did not charge us to build buildings for their own sake, nor to be concerned with our creature comforts. However, he did call us to worship joyfully, passionately, and in community. He also called us to radical hospitality, to acts of intentionality so that all are anticipated, welcomed and given the chance to participate fully in worship and ministry.

Our sanctuary renovation makes a statement: we take God seriously, we take God's work seriously, we mean it when we ask, "Lord, what do you want to do through me?"

God calls us to worship and sends us forth to serve. We heed God's call to action: to self-sacrifice, mercy, Godly values, and making the world better in the practical ways that Jesus modeled, such as reducing poverty, fighting injustice, alleviating human suffering, healing the sick, making peace, extending the reach of God's love. What a privilege it is to be ambassadors for Christ in this time and place, proclaiming his message of love, grace, forgiveness and purpose to people in our Chelsea community and beyond.

This work will be accomplished as each of us takes his or her place in the story. Every significant step taken by our congregation in its 160 year history happened when people worked as one, hands and hearts linked together around a God-sized vision. Together we searchingly pray, "Lord, what do you want to do through me?" As the answer comes into focus, may we have the courage and commitment to respond in faith, "Here I am Lord!"

For the glory of God,

  
Pastor Joy Barrett

  
Pastor Tom Macaulay



A few of the many ways CFUMC reaches out.

**Ordinary people  
living  
differently  
because  
of the love  
of Christ.**



# Not an Equal Share, But an Equal Sacrifice.

As each of us make the important decision of how much to give to the capital campaign, we should ask ourselves three questions:

## 1) Has prayer been the most important factor in your decision?

If your decision is a result of thoughtful prayer, then you can be sure the amount is right.

## 2) Is there an element of faith in your decision?

Is it an amount that you must trust the Lord to provide? If Restore, Renew, Reach Out is to affect us spiritually, we will be willing to trust the Lord to provide.

## 3) Is it sacrificial?

“Not an equal gift, but an equal sacrifice” is important to remember in making this decision. Commitments are pledged over three years, over and above regular tithes and offerings. Clearly, goals such as these call for sacrifice by all of us. They cannot be reached by a few, but will require participation of our entire church family.

Gifts may come from many different sources. Consider one-time gifts other than monthly or yearly income, including gifts of stock, property/real estate or an inheritance, estate items, and family trusts. Each of these gifts may be used to glorify God, while honoring the donor.

## Ordinary people living differently because of the love of Christ.

Connecting with God • Learning in Community • Making a Difference in the World



**Chelsea First United Methodist Church**  
128 Park Street, Chelsea MI 48118  
734-475-8119  
[chelseaumc.org](http://chelseaumc.org) Like us on Facebook

Brochure design donated by  
CFUMC Campaign Leadership Team.

## Campaign Leadership

### Campaign Chairs

Max and Sherri Plank  
Mark and Susan Wellman

### Coordinator

Sandy Schmunk

### Communication Team Chairs

Terry and Lynne Gould

### Prayer Team Chair

Lisa Gray-Lion

### Advance Commitments Team Chairs

Biff and Suzie Weber

### Youth & Children Team Chair

Courtney Aldrich

### Gratitude & Ministry Team Chairs

Jim III and Andrea Alford

### Celebration Team Chair

Melanie Hopp

### Connection Team Chairs

Jim Alford, Jr.  
Ron Mourad

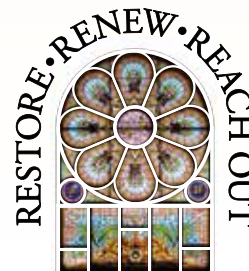
### Pastors

Joy Barrett  
Tom Macaulay

Grounded in Gratitude...

Revealed in Prayer...

Lived in Faith.



Chelsea First  
United Methodist Church  
**SANCTUARY RENOVATION  
CAPITAL CAMPAIGN**