



## Fall Sermon Series

In the summer of 1983 I almost died in a bicycle accident in Santa Barbara, California. By all accounts when I hit the guardrail I should have been launched over a cliff and hurled to my death. Later that day I had a long talk with my youth pastor. Concluding the talk my youth pastor said, “I’d like you to read through the book of John and tell me what it shows you about Jesus.”

Every day I would read a chapter of John. I did this for 21 days and it changed my life. It showed Jesus as caring, loving, and interested in the lives of everyone he came into contact with. Now I would tell you I believe the Gospel of John is the most personal gospel, that it shows Jesus in a most personal way. So I am excited to let you know this fall we will study the Gospel of John.

Here is a little intro, the forth Gospel is very unique and a literary phenomenon. The story of John is nothing less than a daunting mystery. It is clear on the surface, yet rich in depth. Raymond Brown once remarked that Johannine scholars often enjoy detective stories in their leisure time. We need to stand back and look at the Gospel as a whole.

As you know there are three other Gospels, called the synoptic gospels because they are very similar in nature and the way they present both Jesus and the stories. There will be a temptation to compare John to the synoptics – that’s Ok, but don’t rush too quickly to compare. Be careful not to miss what John wants us to grapple with. I believe John was fully aware of the other Gospels and wrote his Gospel to give us a different look. In this case different is not bad.

There are some key themes to focus on in the Gospel of John. One theme is that Jesus is the light of the world. “The light shines in the darkness, but the dark-

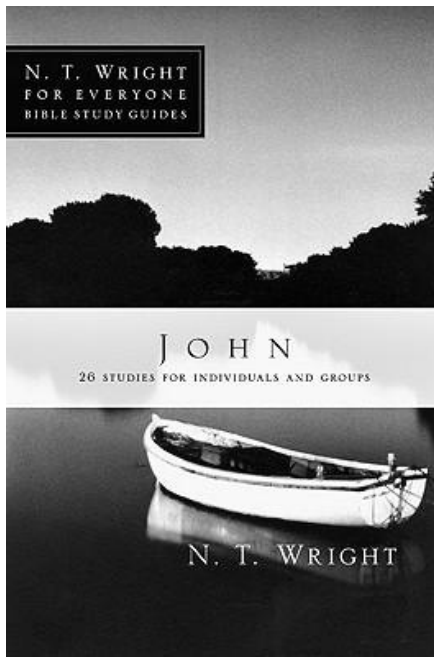
ness has not understood it” (1:5). John often uses dualistic language to make his point. The light and darkness is the way John describes the remarkable invasion of the world by God. John shows how the light offends every modern sensibility; John writes that in Christ we behold the glory of God—even though He appeared in flesh. John tells us the darkness assails the light but cannot extinguish it. The world is in permanent enmity with the Son. But even though Jesus is persecuted, tried, and crucified, John still affirms that the light is not snuffed out.

John tells us the gift of Christ is not simply His revelation of the Father (14:9). John’s second message concerns redemption. “In Him was life, and that life was the light of all people” (1:4). There is hope for us in the world. John shows us the message of redemption is personal, “the sheep know His voice.” Those who embrace this revelation, who identify with the light and have faith, will gain eternal life. Hope for all of us.

I would like to invite you to take it deeper. Many of our small groups will be using N.T. Wright’s study book on John and they are available at church. Please join a small group that will be studying John. To find a group please check your church bulletin, or indicate on your “Staying Connected” yellow card or talk to Pastor Skip.

I believe you will be encouraged and stretched by looking at Jesus through a man who loved Him dearly and was dearly beloved by the Savior. Join us for our first message on September 9<sup>th</sup> and as always if you miss a message download it for free from our website.

Sundoulos,  
*Pastor Mark*



1866 S. Market Boulevard  
Chehalis, WA. 98532  
www.fbcchehalis.org  
Phone 360/748-8628  
Fax 360/740-3787

*SENIOR PASTOR*

**Rev. Mark L. Wilks**  
Ext: 102  
srpastor@fbcchehalis.org  
Home: 748-2961

*ASSOCIATE PASTOR*

**Rev. R.W. "Skip" Grover**  
Ext: 104  
skipg11@comcast.net  
Home: 1-360-786-9360

*YOUTH PASTOR*

**Jeff Hawkins**  
Ext: 103  
uthpastor@fbcchehalis.org  
Home: 508-4050

*CHILDREN'S MINISTRY DIRECTOR*

**Kim Marcus**  
Ext: 100  
kimcd@fbcchehalis.org  
Home: 748-2124

*ADMINISTRATIVE ASSISTANT*

**Cheri Foster**  
Ext: 101  
secretary@fbcchehalis.org  
Home: 219-3571

The Challenger,  
the newsletter of  
Chehalis First Baptist Church  
is published monthly.

Articles to be published in the  
October, 2012 issue are to be  
submitted by **September 20**  
Articles submitted for  
publication may be subject to  
editing.

**e-mail articles to:**  
secretary@fbcchehalis.org

**Church Office Hours**  
8:30 am – 3:30 pm  
Monday through Friday  
Closed for lunch 12:00 to 1:00  
P.M.

## Just Play It!



I LOVE PLAYING THE BELLS!!!!!! I remember when I was in middle school, my grandma in the red house aka: Patty Kerr, taking me to an evening service at the church for a hand bell concert. I thought in my head while listening, I will play those one day! They were so pretty and shiny, and the way the ladies rang them it was like a dance. The BEST part by far though, is the way they sound! After the concert my grandma took me up and the ladies let me ring one and I confirmed it in my head that yep I will play these....

Years later taking my little ones to Sunday school Grace and Skip came to the church and Grace brought those wonderful bells with her. I hemmed and hawed about playing the bells, I hadn't touched

my piano for ages and didn't think I could read music again. But I built up the courage and asked Grace if I could come watch. I fell in love and have been playing ever since. Its been hard work but so worth it. To feel the bell vibrate in your hand when you ring it, and swing to the music when your playing it is just like a dance. The girls in choir will vouch for me cause I'm always yelling during practice to "just play it!", don't get caught up in the counting and reading your notes, play the music, feel the music, move with it, be a part of it. We have a lot of groans and giggles during practice but the friends that I have made through it are awesome!

My visions are big for the bells, Grace has put me in charge of the ensemble group (yikes) and I want to expand our performances. I'm excited to be doing the children's chime choir again for Christmas and gathering more music so maybe we can play at weddings or funerals or even put on a big holiday production.

I just love to play and I hope that it shows while I'm playing for you. So if you your thinking about joining....just jump right in, I'm so glad I did!

*Wenda Coronel*

## Samaritan's Purse

Once again we have the opportunity and the privilege to participate in this ministry to tell children around the world about Jesus by filling shoeboxes.

**Look for the display in the entry way of the church.**

Our goal this year is **300** but I think we could have way more than that. It is really fun to fill boxes as a family or to fill one for each one of your grandchildren.

This year I am offering to fill shoeboxes for those who don't have time or are unable to get out, for the sum of \$15.00 per box. That would include the box, postage and contents. Judy Lyttle (360)748-4765

Collection Day will be November 11<sup>th</sup> but you may bring your boxes at any time.

*Judy Lyttle*

## IN HIS GRIP

One of our core values here at FBCC is community and small groups is one of the best ways to create a community of believers in the church. You hear us talk a lot about Small Groups and yet some of you have asked me exactly what are small groups and why do them. I hope the following will help answer some of your questions.



### WHAT is a small group?

Small groups are groups of men, women or married couples that meet weekly throughout the Chehalis/Centralia Area. Small groups focus on the four disciplines of becoming a completely committed Christ Follower: **Grow** (Bible study), **Connect** (friendships), **Serve** (those in our group and others in the local community), and **Share** (understanding and spreading the Gospel locally and internationally).

When you commit to a small group, you commit not only to the study but also to care for and meet the needs of other group members. The real difference between a Small Group and a Bible study happens outside of group time. Our hope is that your small group will become your closest friends and people you will turn to in time of need.

### HOW do I get connected to a small group?

Mark the appropriate box on the "yellow" connection card or write on the back that you desire to be in a small group. Additionally, you can contact me and I will assist you in getting connected to a group. It usually takes about a week for us to get you connected to a group and we will be in touch throughout the process.

### WHAT happens in a "typical" small group meeting?

Every small group has its own personality, but some common elements happen in most group meetings. Groups typically spend some time building relationships and getting to know each other. Groups also do a study together. Some groups focus strictly on the Bible while others rotate through Biblical and topical studies. At FBCC we have

"all-Church" studies which are sermon based. We will be starting a new study, The Gospel of John, on September 9. Prayer is also a key element to typical group meetings. Many people find that praying in groups is their favorite part of group life. A typical group meeting lasts 1.5 to 2 hours.

### WHAT is the duration of a group?

Our model is for people to build long term relationships with others and share community with new people as well. We understand that people will not be in groups forever, however, it is common for them to be together for at least a year. We also encourage those in groups to start another group with people that God has brought into their lives and enable us to reach more people in Chehalis/Centralia area.

### WHO do I contact if I have any questions?

Your primary contact is Pastor Skip Grover. He will give you information and help you get started in a group. Our other pastors can also help get you started.

*My paper is full for this time,*

*Pastor Skip*

---

## Worship Is....

..... Joining the Family. Romans 12:4-6 (NIV) says "For as we have members in one body, but all the members do not have the same function, so we, being many, are one body in Christ, and individually member of one another Having then gifts differing according to the grace that is given to us, let us use them."

I read somewhere that sometimes people treat churches like restaurants. Well, I went to this restaurant and then on another occasion went to another, then decided to try another etc. However, the church is not a restaurant - it's a family and maybe

you need to engage.

One of the reasons some people feel like they're on the outside looking in is because they attend intermittently and don't commit themselves. Have you been attending this church for a couple of years? Then you need to be involved in a ministry of some kind. There is something for everyone. We always need Sunday School teachers, musicians, janitors, shut-ins who would like a visitor, ushers, nursery workers - you name it, we need it. What is your gift? Did you ever think that perhaps your gift would be useful in ministry? Maybe

we need to stop thinking of the church as *them* and start thinking of the church as *us*. Be a part of the family and take the gifts that God gave you, develop them and use them for HIS glory. If we made ourselves available for ministry, I suggest that church could completely change for us if we stop coming as spectators and instead join the team. We need to be part of the family--part of the local church! Why don't you jump in with all four feet and see where you land? *Think about it.*

*Grace Grover*

# DOWN ON THE FARM – WEEDING

A wall of weeds waves with each wisp of summer breeze, bright green evidence of our inattention. The last few weeks have been hectic. We moved most of our belongings out of the house and into the shop. Then we moved family out of their house and in with us. Between times, we worked on the things we needed to do to prepare for permanent power and water for the new farm house.

Pale green, slender corn stalks disappeared as the weeds grew up, over and around them. Radishes announced their hiding places with their unique leaf design. Feathery carrot tops are buried beneath the heavier, darker weed leaves. If it weren't for the stakes we placed to mark the rows, no one could tell a garden had been planted.

The weeds were so tall that they would have choked out the tiller. When vigorously grabbing weed stems, it would be too easy to rip up a vegetable plant by mistake, so uncovering the seedlings required slow and painstaking hand weeding. That slow process required that the garden be given priority.

Each row we uncovered revealed the vegetables we had hoped for. A

few days with no competition with weeds for light and water and they're already taller and greener. The corn stalks, radish and beet tops seem to celebrate their freedom as they sway in the evening breeze. The war against weeds is never ending. Victory is assured only if we remain vigilant and act quickly when the weeds appear.

Jesus describes a similar conflict in the Parable of the Weeds in Matthew 13:24-30. He describes a field where the owner has planted wheat. While everyone is sleeping, an enemy came and planted weeds among the rows, then snuck away. When the plants began to grow, the servants noticed weeds growing as well and asked the owner what to do. Rather than pull the weeds and risk uprooting the wheat in the process, he told them to let them grow together. When the wheat was ready, he would tell the harvesters to pull the weeds first and bundle them to be burned. After that, with only the good grain left, the harvest could be gathered and brought into the barn.

Knowing that the disciples were uncertain what the parable meant, Jesus explained in Matthew 13:37-43 that the sower of good seed was the Son of Man (himself), the field was

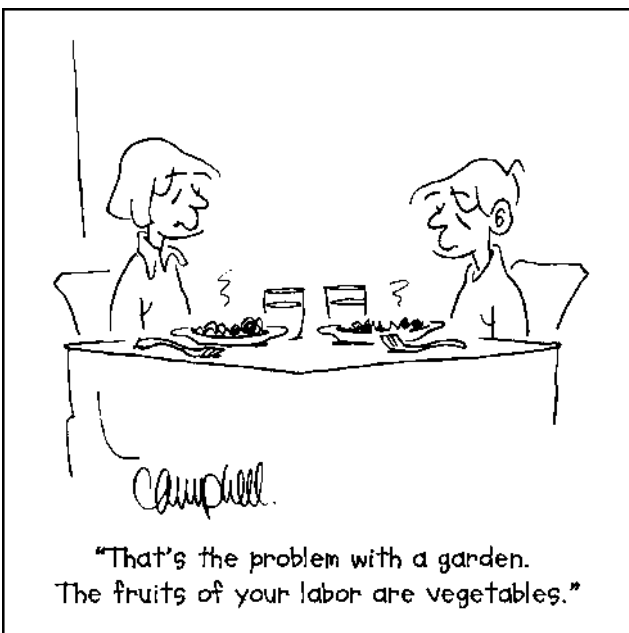
the world and the good seed were sons of the kingdom (the believers). The enemy is Satan and the weeds, those who follow him. When the end of the ages comes, the enemy will be weeded out and thrown into the fiery furnace but the Christ followers will shine like the sun in the Father's kingdom.

In the last part of verse 43, Jesus declares, "He who has ears, let him hear."

Heaven and hell are real. The choice we have to make and the consequences of that choice are eternal. God invites us to be "good seed", followers of Jesus Christ, God's own children. He wants us to be with Him always.

When my gaze wanders over the garden, reveling in the newly revealed corn stalks standing tall and shining in the warm sun, I wonder how the righteous will look when they "shine like the sun in the kingdom of their Father." We will be surrounded by the glory of God, wearing new bodies and seeing with new eyes. What a wondrous moment to look forward to.

*Fay Ternan*



## Dinner for Six



Have you ever thought that it would be nice to meet more people in our congregation? Well, here is a perfect chance to do that. Dinner for Six is paring up 6 people (either couples or singles or combination of both) and having dinner

once a month for three months. It is a lot of fun. You set the day and time and the menu. For more information, find the flyer and display out in the foyer. There is a sign-up sheet on the table. Dinner for Six will begin in October and run through December. Don't miss out on this fun event!!

*Michele Thomas*

# Youth Happenings



## Attention Soccer Fans!

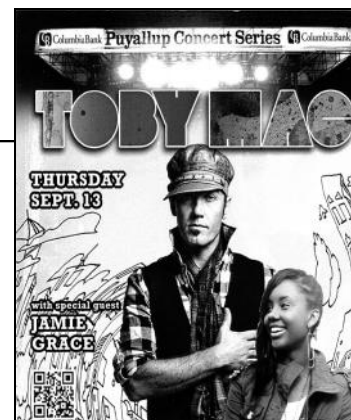
Sign-up with Pastor Jeff for a group trip to Seattle to watch the Sounders play and hear from some of their Christian Players before the game!

Sign up sheet in the youth center, e-mail pastor Jeff at [uthpastor@fbcchehalis.org](mailto:uthpastor@fbcchehalis.org), or write "soccer game" on your yellow staying connected card on Sunday Morning.



## Christian Concert at The Fair in Puyallup

Christian artists TobyMac and Jamie Grace will be performing at a concert at the Puyallup fair this month. Check out [www.thefair.com/concerts](http://www.thefair.com/concerts) for ticket information.



## Christmas Tree Stand Fundraiser

We would once again like to have a Christmas Tree Stand this year to help our youth students afford retreats and trips with the youth ministry. This year our stand will be outside in the parking lot and we are in need of a few items to help make this fundraiser successful once again. Things we need include:

- **Camp Trailer** - to get out of the cold and possibly stay overnight in
- **Lights** - donate your strands of C9 or C7 **clear** lights that are in storage
- **Portable heaters** for outside use
- Other items that may help with protection, safety, and decorating the tree stand

## Wednesday Nights

- 9/5 - Launch: Been there, Done that
- 9/12 - Launch: Think Small
- 9/19 - Launch: Blasting off
- 9/26 - S.Y.A.T.P.

Join us in September as we discover ways God wants us to live our lives as we "Launch" the new school year.



Every Wednesday, Downstairs in the Youth Center. Open to all 6-12 grade students. Doors open at 6:30 with food & friends. At 7:00 we start our times of worship, message, & small groups and the night's events are finished by 8:30.

## Keep an eye out

- Girls school spirit craft night
- Man Trip - Cabela's & BBQ



For more information about our Youth Ministry:

Contact Pastor Jeff at 360/748-8628 x 103,  
E-mail him at [uthpastor@fbcchehalis.org](mailto:uthpastor@fbcchehalis.org),  
Or like our facebook page  
"First Baptist Church Chehalis Youth Ministry"  
to keep up on upcoming events.

# Beach



## Running the Race



“Beach Blast was awesome...Thanks to a great group of youth and adults”



# Blast

## Hebrews 12:1-2



“Amazing weekend at Beach Blast. I feel much closer to God and had a great time with friends.”



“Beach blast was pretty cool”



“Had an amazing weekend”



# Children's Ministry News

**Come celebrate Kick-off Sunday with us on September 9, 2012!**

Mike Foster will be cooking some yummy pancake roll-ups and our Hospitality Team will provide us with fresh fruit and beverages before first service.

We have a terrific Sunday School Team ready to serve the Lord and bless our children. All Sunday School classes will start in their new rooms today.

## 1<sup>st</sup> Hour

- ◆ Room 22: Birth – Toddlers: Cheri Foster & Jenni Duncan
- ◆ Room 24: Toddlers: Tamira Shields & Brittany Bean
- ◆ Room 28: 3's & 4's: Nancy Blomdahl & Mardi Moore



- ◆ Room 11: Kind. – 2<sup>nd</sup> Grade: Debbie Young, Rosie Cruzan & Christine Pierce
- ◆ Room 13: 3<sup>rd</sup> – 5<sup>th</sup> Grade: Laquita Smith & Brandie Chappell

## 2<sup>nd</sup> Hour

- ◆ Room 28 : Children's Church: Summer Ramos along with her rotating team consisting of: Mary Funk, Mary Kraupa, Patti Larson and Suzie Sloan.
- ◆ Children's Church starts after Pastor Mark dismisses children 4 yrs. old – 4<sup>th</sup> Grade during 2<sup>nd</sup> Service. Children's Church will follow along with Pastor Mark's sermons in the Book of John.
- ◆ Room 24: Birth – Toddlers: Jim VanderMeer & Nicole Anderson

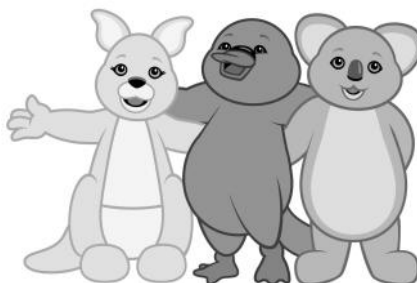


Calling all kids! The fun is about to begin!

Time to Grow in Jesus!

Calling all parents! Come and help your kids grow in Jesus!

**Puggles** - Little Lives, Big Truths – Toddler Nursery for our Awana volunteers



**Cubbies** – Give Kids a Chance to Meet the Lord – 3 & 4 year olds



**Sparks** – Throughout three exciting club ranks – HangGlider, WingRunner and SkyStormer – Sparkies travel through Scripture chronologically. Each flight-themed Sparks handbook covers a different portion of the Bible, picking up where the last one left off. The Sparks program also includes the people and places they read about are real.



**Truth & Training (T & T)** – Third through Sixth-Grade. At an age when kids are being pulled in every direction, T & T provides a solid spiritual foundation. Help keep Bible study and evangelism high priorities in their lives with T & T.



Awana meets on Sunday from 4:30 – 6:30 p.m. Parents, please bring your children in before 4:30 p.m., in order to sign in and get your children delivered to the correct room. Parents are encouraged to come early for closing to hear their children's accomplishments for the evening and any pertinent announcements. Of course, we also invite parents to join us and become an Awana leader.

## September, Schedule

- 2 – Labor Day (no Awana)
- 9 - BBQ for Clubbers & Parents – 1<sup>st</sup> Awana Club Night!
- 16 – Bring a Friend Night
- 23 – Water Balloon Night
- 30 - Bring a Box/Can of Food

Can you feel the excitement in the air already? I sure do. Come join us!

*Kim Marcus*

Children's Ministry Director  
Awana Commander  
748-2124



# Women's News

I can't believe that fall is only a few weeks away and as I am writing this our youth are getting ready to begin their next year of school. On that note our next women's crafting bee will be Saturday, September 15, 10 am - 2 pm in the fellowship hall.

I will have a list of the seniors who will be graduating in 2013 for those of you who have indicated that they would like to participate in making graduate quilts. I will also bring some books with patterns to give you some ideas.

Come for an hour or two or stay the whole time. Bring a craft, or just stay for the fellowship. Don't forget to bring a sack lunch. I will see you there.

*Cheri Foster*



All ladies of the church are invited to attend a salad luncheon honoring Roberta Stephens, IM missionary to Japan, at 12 pm, Thursday, September 27 in the fellowship Hall. Roberta will be sharing her experiences in Japan. For more information please contact Mary Funk, 748-8718.

Looking ahead: The Far West Area American Baptist Women's Fall Rally will be held at our church on Saturday, October 20. The speaker will be Jean Nash, Olympia, who has just completed a year as a volunteer in Costa Rica working with Gary and Mylinda Baits. Mylinda Baits is planning to attend. The cost of the rally and luncheon is \$15.

For more information please contact Mary Funk, 748-8718.

*Mary Funk*

Missions Team Leader



**moms in PRAYER**  
INTERNATIONAL

## Come Pray with Us!

You're invited to our Moms in Prayer group. Do you worry about your children? Replace your anxiety and fear with peace and hope by praying with other moms. Moms in Prayer International gathers women together to pray specifically and scripturally for our children and their schools.

Please join us for coffee and pastries in the FBCC Library on Tuesday, September 11 from 8:30 to 9:30 am and learn more about this ministry.

For additional information, please contact Mindy Schwarz at 748-8734 or you can visit the website [www.MomsInPrayer.org](http://www.MomsInPrayer.org).

## Mission of the Month

The Greater Chehalis Food Bank is our September Mission of the Month. The food bank which was originated by our church is currently serving our community through temporary facilities at the Yard Bird Shopping Center. Food is distributed each Friday to needy families. Liz Masset and Angela Abarta and family have been volunteering there.

The Greater Chehalis Food Bank is working to build a new facility. They have purchased a small parcel on SW 21st Street behind the Lewis County Fire District #6 station and

are working through the design and permitting process for the new facility. The proposed 7500 square foot facility will be owned and operated by the Greater Chehalis Food Bank and in addition to providing space for their operations will include space for the Lewis County Food Bank Coalition distribution center.


The Greater Chehalis Food Bank serves 400-515 families per month while the Lewis County Coalition serves 2300-2500 families per month. In addition to the Friday distribution

days they also deliver food to the local senior affordable housing. Even in difficult economic times they continue to meet the ever-increasing demand. Let us support this vital organization with our financial gifts and by bringing non-perishable food items having current pull-dates to the church during the month of September.

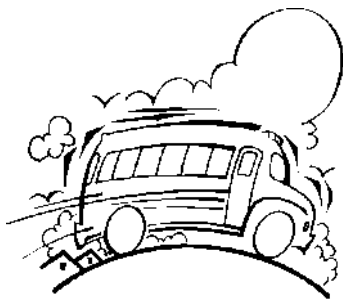
*Mary Funk,*

Missions Team Leader

# *What's Happening at FBCC this Month*

|  |  |  |     |     |      |     |      |     |      |     |
|--|--|--|-----|-----|------|-----|------|-----|------|-----|
| <p><b>Dan &amp; Sarah Chetti Here</b><br/>                 Sunday, September 2 @<br/>                 9:15 &amp; 11 am</p>    | <p><b>Awana Club Begins</b><br/>                 Sunday, September 9 @ 4:30 pm<br/>                 BBQ Dinner for clubbers and parents</p>  | <p><b>Women's Crafting Bee</b><br/>                 Saturday, September 15 @ 10 am<br/>                 Fellowship Hall<br/>                 Join us for a time of crafting,<br/>                 ministry and fellowship, Don't<br/>                 forget to bring a sack lunch<br/>                 Cheri Foster, 360-219-3571</p>   |     |     |      |     |      |     |      |     |
| <p><b>Study of John Begins</b><br/>                 Sunday, September 9<br/>                 Get in a small group<br/>                 Check your bulletin for a group, Sign<br/>                 up on your yellow staying connected<br/>                 card, or contact Pastor Skip<br/>                 360-748-8628</p>  | <p><b>Handbell Practice Begins</b><br/>                 Monday, September 10<br/>                 Contact Grace Grover<br/>                 g2g1@earthlink.net or<br/>                 360-786-9360</p>  | <p><b>Membership C.L.A.S.S. 101</b><br/>                 Sunday, August 30 @ 12:30 pm<br/>                 Fellowship Hall<br/>                 CLASS 101 is all about what we<br/>                 believe, what we are doing here and<br/>                 what makes us different from other<br/>                 churches. Write CLASS 101 on<br/>                 your yellow staying connected card<br/>                 or contact the church office.</p> |     |     |      |     |      |     |      |     |
| <p><b>Kickoff Sunday</b><br/>                 Sunday, September 9<br/>                 All Sunday School classes will be in<br/>                 their new classrooms. Mike Foster<br/>                 will be making his famous pancake<br/>                 rollups so be sure and show up early<br/>                 for Sunday School.<br/>                 Kim Marcus 748-2124</p> | <p><b>Men's Breakfast</b><br/>                 Saturday, September 15 @ 7 am<br/>                 Fellowship Hall<br/>                 Join us for breakfast, prayer, a<br/>                 devotional and fellowship.<br/>                 Mike Foster, 360-219-3617</p> | <p style="text-align: center;"><u><b>Worship Attendance</b></u></p> <table style="margin-left: auto; margin-right: auto;"> <tr><td style="text-align: right;">8/5</td><td>162</td></tr> <tr><td style="text-align: right;">8/12</td><td>205</td></tr> <tr><td style="text-align: right;">8/19</td><td>190</td></tr> <tr><td style="text-align: right;">8/26</td><td>201</td></tr> </table>   | 8/5 | 162 | 8/12 | 205 | 8/19 | 190 | 8/26 | 201 |
| 8/5  | 162  |  |     |     |      |     |      |     |      |     |
| 8/12   | 205  |  |     |     |      |     |      |     |      |     |
| 8/19   | 190  |  |     |     |      |     |      |     |      |     |
| 8/26   | 201  |  |     |     |      |     |      |     |      |     |

## PRIME TIMERS: FALL SCHEDULE



- Senior Adult Camp: September 10 - 13 (Monday - Thursday) at Camp Bethel - 55 and older. It is not too late to sign up. Brochures are

- available at the information desk in the foyer. If you haven't registered with Kyle, you should do it right away.
- We will have a luncheon at the church on Thursday, October 11 (\$5), 12 pm in the fellowship hall. The Senior Center will share their various activities and ministries.
  - We will travel to the Lucky Eagle for their Senior Adult Buffet (\$5.95) on Monday, October 22. Meet in the upper parking lot at 11:30 am to carpool. We would like to do an

activity after we eat. Contact John Lyttle, 748-4765 with any ideas.

- We will have a luncheon (\$5) on Thursday, November 8, 12 pm in the fellowship Hall. Marv Johnson will guide us in the making of Christmas wreaths.
- Our annual Christmas Dinner (\$10), is Friday, December 7, 6:30 pm in the fellowship hall. The program will include singing Christmas Carols, special music and a Christmas devotional

*John Lyttle*

## *Men's Fishing Weekend at Camp Bethel*

Join with men from several churches for a weekend filled with great fellowship, good food and FISHING! October 12 - 14. Damon Lake holds sea run cutthroat trout,

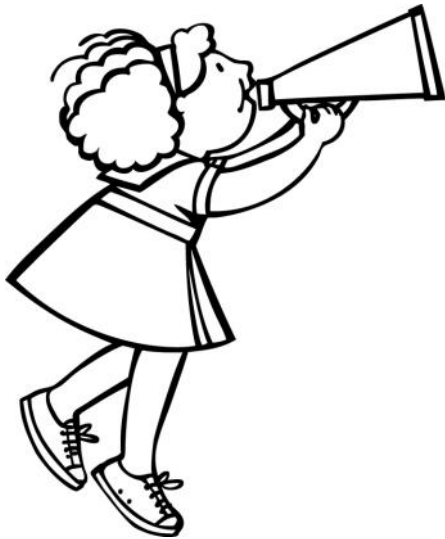
jack salmon (sometimes silver salmon). The Humptulips river contains silver, Chinook and jack salmon. John Lyttle has pictures to share. Registration information is

available at the information table in the foyer.

# September 2012

| Sun  | Mon                                     | Tue  | Wed  | Thu  | Fri   | Sat   |
|--|---|--|--|--|---|---|
|  |   |  |  |  |   | 1<br>Family Camp, Camp Bethel<br>7 pm Gen "Y" Group                               |
| 2<br><b>Communion Sunday<br/>Chetti's Here</b><br>8:15 am Sunday School<br>9:15 am Sunday School<br>9:15 am Worship Svc<br>11 am Sunday School<br>11 am Worship Svc<br>Family Camp, Camp Bethel                                      | 3<br><b>Labor Day<br/>Office Closed</b> | 4<br>6:30 am Men's Morning<br>Connection Group<br><br>6 pm Connection Group  | 5<br>6:30 am Prayer Group<br><br>6:30 pm Youth Groups                        | 6<br><br>5 pm Women's Group<br>6:30 pm Scheuber Road<br>Connection Group   | 7<br><br>12 pm Soup & Scripture   | 8<br><br>7 pm Gen "Y" Group   |
| 9 <b>John Study Begins<br/>Kickoff Sunday</b><br>8:15 am Sunday School<br>9:15 am Sunday School<br>9:15 am Worship Svc<br>11 am Sunday School<br>11 am Worship Svc<br>4:30 pm Awana Club<br>6:30 pm Ramsaur Road<br>Connection Group | 10<br><br>6 pm Handbell Practice        | 11<br>6:30 am Men's Morning<br>Connection Group<br><br>6 pm Connection Group | 12<br>6:30 am Prayer Group<br><br>6:30 pm Youth Groups<br>7 pm Women's Group | 13<br><br>5 pm Women's Group<br>6:30 pm Scheuber Road<br>Connection Group<br>7 pm Hwy 603<br>Connection Group                                    | 14<br><br>12 pm Soup & Scripture<br><br>6:30 pm Boistfort<br>Connection group | 15<br>7 am Men's Breakfast<br>10 am Women's Crafting<br>Bee<br>7 pm Gen "Y" Group |
| 16<br>8:15 am Sunday School<br>9:15 am Sunday School<br>9:15 am Worship Svc<br>11 am Sunday School<br>11 am Worship Svc<br>4:30 pm Awana Club<br>6:30 pm Ramsaur Road<br>Connection Group  | 17<br><br>6 pm Handbell Practice        | 18<br>6:30 am Men's Morning<br>Connection Group<br><br>6 pm Connection Group | 19<br>6:30 am Prayer Group<br><br>6:30 pm Youth Groups<br>7 pm Women's Group | 20<br>5 pm Women's Group<br>6:30 pm Scheuber Road<br>Connection Group<br>7 pm Hwy 603<br>Connection Group<br>11:59 pm Challenger<br>Articles Due | 21<br><br>12 pm Soup & Scripture<br><br>6:30 pm Boistfort<br>Connection group | 22<br><br>7 pm Gen "Y" Group  |
| 23<br>8:15 am Sunday School<br>9:15 am Sunday School<br>9:15 am Worship Svc<br>11 am Sunday School<br>11 am Worship Svc<br>4:30 pm Awana Club<br>6:30 pm Ramsaur Road<br>Connection Group  | 24<br><br>6 pm Handbell Practice        | 25<br>6:30 am Men's Morning<br>Connection Group<br><br>6 pm Connection Group | 26<br>6:30 am Prayer Group<br><br>6:30 pm Youth Groups<br>7 pm Women's Group | 27<br><br>5 pm Women's Group<br>6:30 pm Scheuber Road<br>Connection Group<br>7 pm Hwy 603<br>Connection Group                                    | 28<br><br>12 pm Soup & Scripture<br><br>6:30 pm Boistfort<br>Connection group | 29<br><br>7 pm Gen "Y" Group  |
| 30<br>8:15 am Sunday School<br>9:15 am Sunday School<br>9:15 am Worship Svc<br>11 am Sunday School<br>11 am Worship Svc<br>12:30 pm CLASS 101<br>4:30 pm Awana Club<br>6:30 pm Ramsaur Road<br>Connection Group                      |   |  |  |  |   |   |

# Sunday, September 9



- ◇ Gospel of John Study Begins
- ◇ Yummy Rolled up Pancakes & Fruit before 9:15 service
- ◇ Sunday School classes will be in their new Classes
- ◇ Awana Club begins at 4:30 pm with a Barbeque for Children and Parents

***First Baptist Church***



1866 S. Market Boulevard  
Chehalis, WA. 98532

**NON-PROFIT  
ORGANIZATION  
U.S. POSTAGE PAID**  
Chehalis, WA 98532  
Permit Number 24

CHANGE SERVICE REQUESTED