

# CRESCENT CONNECTIONS

Crescent Avenue Presbyterian Church

Lent/Easter 2018



## Crescent Connections

Crescent Avenue Presbyterian Church  
716 Watchung Avenue,  
Plainfield, New Jersey 07060

February 2018  
[crescentonline.org](http://crescentonline.org)  
908-756-2468

### Pastoral Letter

#### Lent/Easter 2018 Edition

Dear Brothers and Sisters in Christ,



When I first began traveling I would seriously over pack for my trips. I wanted to ensure that I had everything I might need to encounter whatever situation I might find myself in and made list after list to ensure I had everything 'covered.' I still make lists but those lists have grown much shorter. Experience taught me what was necessary and what could be left behind (or procured where I was going). Fellow travelers helped with discerning as well, and there are things I know I always want to take along with me no matter where I go (my Kindle, headphones and a journal). We have to go with some baggage, it comes with life, but we don't want so much that the mere act of dragging it around prevents us from enjoying the journey and experiencing our surroundings.

The season of Lent is a little like that packing process. Knowing that God is calling me on a new journey, I stop and reflect on what I am dragging around with me that I can let go of and what I think I will need to help me along the way. Hopefully, like a seasoned traveler, I may be able to help you discern travel items that you might find helpful as well. This season we will continue our Ash Wednesday, Maundy Thursday and (newly revised) Tennebrae Services. We will also continue our mid-week services. There are great devotionals, a recommended book for the journey, regular Sunday service...the list of opportunities grows. Please don't feel you have to pack everything. Prayerfully consider what you believe you will need for the journey and be open to make changes along the way.

This newsletter contains lots of information about upcoming events, resources that are available, news to inform your journey and information about your fellow travelers. I hope that this season of Lent will be a wonderful pilgrimage of discovery that will lead to a glorious Easter I look forward to journeying with you in faith.

Yours in Christ,

*Pastor Lynn*

## Around the CAPC Campus

### BUILDINGS AND GROUNDS

#### Update on Kitchen Renovation.

Pricing from the vendors have been higher than expected, so we have reached out to more vendors to ensure pricing is comparable. We are expecting bids from the last two vendors by the 2nd week of February. After the bids are received, we will select vendors, file for permits and begin the plumbing and electrical work.

Preliminary work that has been accomplished includes asbestos removal and sewage clean up in the crawl space under kitchen. The 1950 and 1970 refrigerators were disposed of on February 9th. New appliances will be delivered the week February 12th.

Below are the new projects we are planning for 2018:

- Adding additional surveillance cameras on the 2nd floor, outside and sanctuary.
- Hosting another yard sale in late spring or early summer.
- Upgrading the memorial garden
- Refurbishing additional chairs for the Chapel

Campus renovations, improvements and repairs reflect the pride we have in this amazing facility and our continued work to ensure it remains a viable, vibrant part of our community. Thank you to everyone who works so hard to make it happen!

*Nick Stevens*



## CEN – On the Move Come Join Us

The Christian Education and Nurture committee is always on the move-planning, organizing, teaching, creating and administering, and debriefing a myriad of events during the course of a program year. Whether we're determining what might be the best curriculum choice for Sunday School students or a suitable movie title for Family Movie Night, we keep our vision in mind: *to promote biblical literacy, nurture Christian fellowship and encourage lifetime service to Christ and the world.* We know that without vision people perish and lately we've been overjoyed to see the manifestation of our prayers and hard work as Sunday School attendance is improving and the youth of our church are highly visible serving as Acolytes, helpers preparing bag lunches, and the ones conducting the Heifer International sale to assist people in distressed communities world-wide.

At our most recent meeting on January 31st, CEN excitedly welcomed its newest committee member, Sally Nkellefack. CEN would love to have more new workers on the bus as we depart for the future destinations that God intends for us. Whatever your age, talents and abilities, or hobbies, the Lord can use you. Just to give you a feel for what we have been doing and what we will be doing- December was a banner month with The Live Nativity and Journey to Bethlehem projects. The hallway bulletin between the conference rooms has some great photos on display of these two events. During January we resumed teaching Sunday School using the lectionary-aligned curriculum, *Feasting on the Word*. February will be busy with the Souper Bowl of Caring, bag lunch, and Black History projects. And early in March we're planning to host another Family Movie Night.

CEN generally meets at the church once a month during the week, with the date and time set around the availability of committee members. There are times we use phone conferencing in lieu of a face-to-face meeting, and also those times we'll meet more than once in a given month as dictated by the projects we're engaged in. Don't worry if your busy schedule won't allow you to be present for every meeting, we provide notes and other methods of follow-up to ensure everyone is on board. CEN's invitation is an open one. We're on the move-Come Join Us. For further information contact

***Stephanie DeGeneste***

smdeg7@juno.com or 732.545.9422.

## STEWARDSHIP & FINANCE

### 2017 Annual Report

#### The Year in Review:

Less than 10 years ago we were withdrawing over \$200,000 a year from our endowment fund in order to meet our expenses. It wasn't any fun to attend meeting of the Ministry during that period. We recognized that drastic action was necessary if the church was going to survive for another decade. We took action and restructured our staff, made conscious efforts to increase building rentals with a goal of having our campus pay for itself and asked for a greater commitment from the congregation. Last year, Kathy Mann reported that we had started on a really positive road. Because the committee and the congregation adopted a positive attitude that we could and would continue our witness at Crescent Avenue we have moved forward and amazing things continue to happen at Crescent Avenue. The last meeting of the Ministry was one of smiles and laughter for the good things that have happened and looking forward to what we anticipate will happen next year and the years to come.

Our building is closer than ever to paying for itself. While we no longer have St. Stephens, other groups have contracted with us for both short and long term usage of the building. As a result of the work done to renovate the church house, we've become an attractive venue for meetings and parties. We more than doubled the anticipated use of the sanctuary for weddings. When the renovation of the kitchen is completed in early 2018 we expect additional rentals because we will have a facility that meets code and can be used by "home cooks" who want to market their products.



For the past few years we have been able to let our endowment appreciate without making monthly withdrawals due to unanticipated receipt of monies from trusts created by former members. This year we were blessed to learn that we were beneficiaries of a trust created by former member and Deacon Mary Donahue. We received a check for \$191,854. In addition we received generous bequests from Fran and Bill Stoll. We continue to benefit from family trusts created by the generosity of prior members through. Because of favorable market conditions exceeded the revenue for 2016 by more than \$6,000. Total revenue received as \$261,271.

## CRESCENT CONNECTIONS

Crescent Avenue Presbyterian Church

Lent/Easter 2018

We continue to carefully monitor our spending and have been able to limit withdrawals from the endowment to well below the amount projected in the budget.

The Endowment/General Fund ended the year with a balance of \$1,129,508. This represented a 13% return on the principle of the Fund. In addition, we had \$111,871 in our General Fund and \$272,904 in the General Reserve Fund which includes the proceeds from the Donahue Trust. Once again we are blessed to have the Endowment/General Fund over the million dollar mark.

As to the other side of our work, we are happy to note that the number of pledges increased for 2018 over 2017 and the majority of those submitting pledges increased their financial commitment to the church in 2018. We thank the members for their continued financial support which makes our ministries possible.



### The Future:

We are looking forward to significant activity and excitement here at Crescent Avenue in 2018. After a series of delays, the kitchen renovation should be completed. The kitchen renovation is a critical project in the overall restoration of our physical plant and our plan to have the building be financially self-sustaining. The Keyes Family Foundation gave us another \$20,000 toward this project in addition to the annual funding of \$20,000 for the operation of our food ministries. We were also able to obtain several grants to assist with the funding of this project. We have come to realize that not only do we see that CAPC is important to the community but others realize it as well. We have important projects that make a difference to the community and there are potential funding sources out there if we just look for them.

We are also looking forward to celebrating the 175<sup>th</sup> Anniversary of the founding of Crescent Avenue in 2019. We are hopeful that we can mark that milestone with completion of the first phase of our exterior restoration - finally utilizing the Stonework Fund which has sat idle for several years.



## CRESCENT CONNECTIONS

Crescent Avenue Presbyterian Church

Lent/Easter 2018

There are many sheets with many numbers included in this annual report. I would hope that you would feel comfortable asking any member of the Finance Committee about any questions that you may have or join the Finance Committee as we continue to do make a real difference in our community.

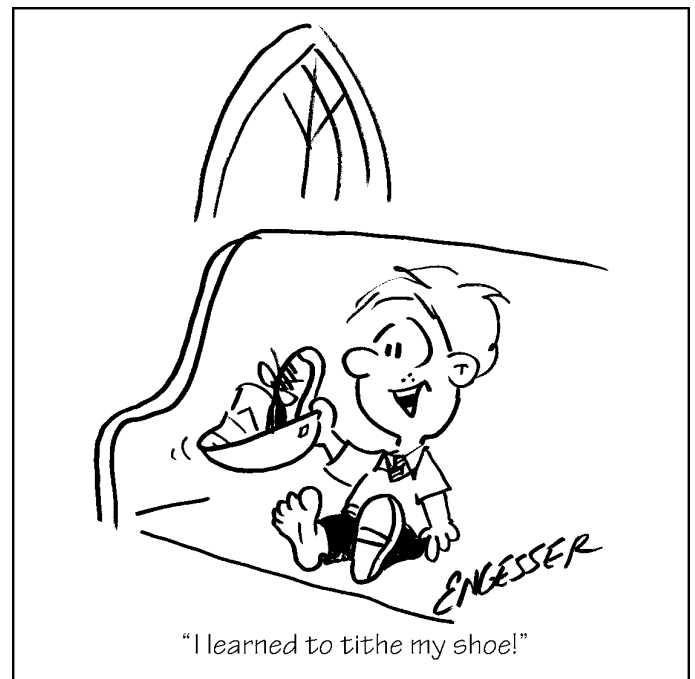
Throughout the year, the Finance Committee has worked hard to streamline our finances, look for areas where we have potential to grow and to envision a financially secure future for CAPS. Kathy Mann, Laura Mann, B.J. Snyder and Nick Stevens spent countless hours on the work of the ministry. That being said- our greatest debt of gratitude and thanks goes to Gary Mann, who volunteers as the church's bookkeeper spending countless hours every Monday recording contributions and paying our bills. He then generates the reports such as those appearing in this booklet and comes to the meetings and explains them to the non-CPAs on the committee. We are truly blessed to have him working with us.

Pastor Lynn is our guiding force, attending all our meetings and providing the insights about the daily workings of the operation and the oversight to keep us on track and on point. I believe that her guidance has been invaluable to getting us to where we are today.

Respectfully submitted,

*Joax Van Pelt Pirnichny*

Chairman, Ministry of Stewardship and Finance



## CRESCENT CONNECTIONS

Crescent Avenue Presbyterian Church

Lent/Easter 2018

# MEMBERSHIP & EVANGELISM

The Membership and Evangelism Committee is growing and is off to an active start for 2018! We had our first meeting, at which we discussed our mission statement and mapped out goals for the year. Quarterly editions of "Crescent Connections" is on our agenda, as is boosting our Facebook presence and working on our website.

One of our most important missions is welcoming visitors and encouraging new members. To this end, we will soon be handing out Visitor Welcome Packets and developing a New Member class. Being warm and welcoming is something that we Crescentonians are really, really good at! Let's all continue our greetings of warmth and love to our Sunday visitors.

With so many important ways God is working here at CAPC, the committee will strive to better publicize events to heighten our visibility and to encourage involvement, both within our congregation and in the community. We want to spread our Good News! Also in the works is a CAPC Game Night for adult members and friends. Note on your calendars, Friday April 27<sup>th</sup> for a fun social event of games, food and raffle baskets!

*Bj Snyder*



February thru May

|                        |       |                      |       |
|------------------------|-------|----------------------|-------|
| MCINTYRE, Nina         | 02/03 | HERMAN, Betsy        | 04/02 |
| BAKER, Barry           | 02/10 | OSBORNE Jr., Harry   | 04/04 |
| EALUM, Rosslyn         | 02/14 | BAKER, Brianna       | 04/07 |
| FEDECHENA, Lauren      | 02/14 | FAHRENHOLZ, Cristine | 04/16 |
| MARTIN, Benji          | 02/14 | HANNAH, Judy         | 04/30 |
| MANU, Henry            | 02/15 | RAMSEY, Janet        | 04/30 |
| ASARE, Adin            | 02/18 | TREPPER, Gaby        | 04/30 |
| BAKER, Pat             | 02/18 | DUNCHUS, Gary        | 05/01 |
| GERMINDER, George      | 02/18 | KENNEDY, Nicholas    | 05/02 |
| VELEZ, Joy             | 02/24 | DIONY, Samuel        | 05/06 |
| BUCK, Jeanmarie        | 02/25 | PIVNICHNY, Doug      | 05/10 |
| DEGENESTE, Queintard   | 02/27 | FLEMING, Patricia    | 05/12 |
| MCINTYRE, Xavier       | 02/29 | COOK, Sonnia         | 05/13 |
| FLECK, Ursula          | 03/03 | FOFIE, Charlotte     | 05/13 |
| ARTZ III, Allen        | 03/04 | MANN, Katharine      | 05/14 |
| ROBINSON, Sandra       | 03/07 | RAUSCHER, Elizabeth  | 05/16 |
| DUNCHUS, Anna          | 03/10 | PETERSON, Janna      | 05/18 |
| FOLTZ-MORRISON, Bob    | 03/22 | DUNCHUS, Maya        | 05/19 |
| BUCK, Nina             | 03/23 | PIVNICHNY, Joan      | 05/19 |
| FOLTZ-MORRISON, Andrew | 03/25 | DOWNING, Jeffrey     | 05/21 |
| MALTBY, Ronald         | 03/27 | BUCK, Sydney         | 05/28 |

## What's Happening With MISSION & OUTREACH...

Non-perishable food collection continues for Starfish, the local food pantry in Plainfield. Our contributions are always welcomed and appreciated by the Starfish folks. Your donations may be placed in the Starfish bin in the office.

Missions is also continuing to collect Senior Citizen Bingo prize items for local nursing homes. The response to this new project has been great, thank you! Please remember our local Seniors by donating any small items to the box in the office.

The Crescent Soup Kitchen faithfully served meals every Tuesday afternoon (except the last Tuesday of the month) before going on hiatus in the Fall for kitchen renovations. Currently, bag lunches continue to be distributed Monday through Friday.

Due to your generosity, Missions was able to again participate in the Box Project and support a family living in rural poverty in the Mississippi delta. An amazing gift of \$675 in gift cards was sent to our family, allowing the mother of five to purchase Christmas gifts for her family. Thank you to all for helping make Christmas special for Feleshia and her family!

On January 23<sup>rd</sup>, a Sock Drive was held here at Crescent to distribute socks, gloves and other warm clothing. Wesley United Methodist Church in South Plainfield and Crescent Avenue Presbyterian Church in Plainfield, along with LiVay Sweet Shop in Plainfield, worked together to collect warm socks, gloves, hats and scarves to give to those in need in the community. Crescent Avenue Church hosted an event where 12 volunteers handed out the warm items. Coffee and hot chocolate, oranges and cookies were also available. A Huge THANK YOU to Valarie Fisher and Cindy GaNun for coordinating this wonderful event.



Valarie Fisher, Cindy GaNun and JoAnn Bandomer help to collect items for community members in need.

### Churches Are Working Together To Help Those in Need

Wesley United Methodist Church in South Plainfield and Crescent Avenue Presbyterian Church in Plainfield, along with LiVay Sweet Shop in Plainfield, worked together to collect warm socks, gloves, hats and scarves to give to those in need

in the community. Crescent Avenue Church hosted an event where 12 volunteers handed out the warm items. Coffee and hot chocolate, oranges and cookies were also available.

UPCOMING EVENTS- "One Great Hour of Sharing" (Palm Sunday) and "Blanket Sunday" (Mother's Day).

*Heartfelt thanks to all for your continued support of Missions projects!*

*Pat Fleming & BJ Snyder*



## DEACON Dealings

The Deacons continued their tradition of Congregational Care, Communion set up, coffee hour and fellowship in 2017. Our team of 12 is a dedicated group of CAPC members who take great pride in providing fellowship each week after the worship service. We have a special end of the month birthday cake for all celebrations and really enjoy being the catalyst for coffee and conversation each Sunday. We're the hospitality team for any special Sundays and provide the refreshments during events at CAPC. We also run our own committees, which include coordinating flowers for the Chancel each week, our card ministry for congregational care & orchestrating Communion.

We were happy to be a part of the Coffee and Conversation speaker on Dementia and Alzheimers and are looking forward to more presentations in 2018.

Pastor Lynn is very involved with the Deacons in congregational care and continues to provide the CareNotes and grief booklets which are available in the church office, library and from the Pastor.

We not only handle ushering and coffee hour for every service, but many of us serve on the various committees here at CAPC. Missions, Evangelism, Finance, Christian Ed and the Ministry of Worship and Music are all represented with a Deacon.

If you aren't a Deacon, but would be willing to help out with ushering or coffee hour, please let Dominique Stevens or Julie Downing know; we'd love to have you involved!



## FINANCE

2018 promises to be another great year in the life of Crescent Avenue Presbyterian Church. We remain financially viable and the budget for 2018 continues to provide for ongoing programs and new and exciting plans for improvements. Our buildings and grounds continue to be a huge overhead expense. We have a solid plan for building improvements that will allow for income from building use to offset the huge cost of maintaining our beautiful Church home.

The kitchen renovation project will be completed in 2018 and the soup kitchen ministry will be able to once again provide a hot meal to the hungry in Plainfield. We will need to work together to accomplish this goal but I am confident that it can and will be done. As a congregation we are a generous group and we all care about the legacy of Crescent Avenue Presbyterian Church and its important role in Plainfield and the surrounding communities.

Our budget for 2018 also provides for our robust music program that is so important to all of us. The combination of the wonderful music and the creative worship opportunities will allow us all to grow in our faith. The nurture and education of our children and our adults is also an important component of our congregation and that budget is also supported for 2018. The membership and evangelism committee will continue to explore innovative ways to reach out and get our story out there. We do some amazing things and we need to make sure that everyone knows it.

As always, it is up to all of us to make things happen. There is something very special about Crescent Avenue Presbyterian Church. For those of us that get to worship here, we all know it. Let's continue to work together to insure that this special place continues to be a beacon for all of Plainfield.

*Kathy Marx*



# Crescent Concerts

*Showcase for  
Exceptional  
Young Artists*

Sunday  
February 25, 2018  
at 3:00 pm

*These talented local musicians,  
chosen by competitive audition,  
will amaze you!*

General Admission \$20, Seniors \$15, Students \$5

Crescent Avenue Presbyterian Church  
Watchung Avenue at East Seventh Street,  
Plainfield, NJ 07060  
[CrescentConcerts.org](http://CrescentConcerts.org)  
908-756-2468



Albert Gu  
Piano



Yulia Kuzniar  
Piano



Jeffrey Xu  
Piano



Jake Cheng



Jeffrey Koc  
Piano Duo



Made possible by funds from the New Jersey  
State Council on the Arts, a partner agency  
of the National Endowment for the Arts.



## CRESCENT CONNECTIONS

Crescent Avenue Presbyterian Church

Lent/Easter 2018

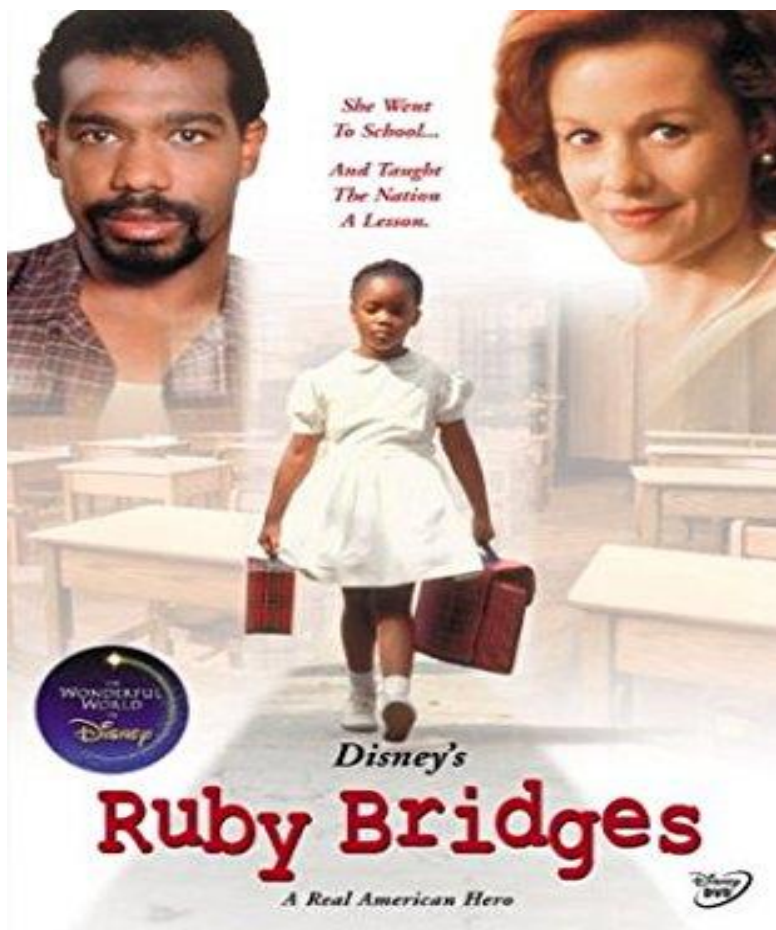
On Saturday March 3rd in the Guild Room,  
Family Movie Night sponsored by the CEN  
committee

will present the film

### "Ruby Bridges"

The evening will begin  
at 5:00 with a pot luck supper  
(please bring salad, sandwiches,  
entree, or a dessert)  
and conclude by 8:00 PM.

To help us in our planning  
please respond to the office if you are coming.



This movie is about a six year old African-American girl who scores very well on early scholastic tests and is chosen by the New Orleans school district to be the first of her race to be integrated in that city's public school system. Ruby Nell Bridges was the first African-American child to desegregate the all-white William Frantz Elementary School in Louisiana during the New Orleans school desegregation crisis in 1960.

# CRESCENT CONNECTIONS

Crescent Avenue Presbyterian Church

Lent/Easter 2018



***Come Relive***



**Jesus' Holy Week Journey**



*"Given for you..."*

**From  
His Triumphal Entry**



**to  
His Crucifixion**



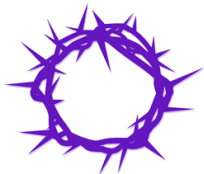
**WHEN:**

March 25, 2017 from 9:30-10:15 AM



**WHERE:**

Crescent Avenue Presbyterian Church  
Guild Room & Assembly Room  
716 Watchung Avenue  
Plainfield, NJ 07060



**Presented by:**

The Christian Education and Nurture Department



**John 3:16**

*"For God so loved the world that he gave his only Son, that whoever believes in him should not perish but have eternal life."*

-RSV





# CRESCENT CONNECTIONS

Crescent Avenue Presbyterian Church

Lent/Easter 2018

## COMING UP @ CAPC

### **WEDNESDAY, FEBRUARY 14, 2018**

06:00 PM - 07:30 PM

07:30 PM - 08:30 PM

### **ASH WEDNESDAY**

Lenten Soup Supper

Ash Wednesday Worship Service

*"Thy Will Be Done"*

Guild Room

Sanctuary

### **SATURDAY, FEBRUARY 17, 2018**

09:00 AM - 03:30 PM

Session Meeting

Choir & Guild Rooms

### **SUNDAY, FEBRUARY 18, 2018**

12:00 PM - 02:30 PM

### **1<sup>ST</sup> SUNDAY OF LENT**

Session Meeting

Conf Rm 101

### **MONDAY, FEBRUARY 19, 2018**

### **PRESIDENTS DAY**

Holiday - Office Closed

### **WEDNESDAY, FEBRUARY 21, 2018**

06:00 PM - 07:30 PM

07:30 PM - 08:30 PM

Lenten Soup Supper

Worship Service-*"Thy Will Be Done"*

Guild Room

Chapel

### **SUNDAY, FEBRUARY 25, 2018**

03:00 PM - 04:30 PM

### **2<sup>ND</sup> LENT**

Crescent Concerts presents

*Extraordinary Young Artists*

Sanctuary

### **WEDNESDAY, FEBRUARY 28, 2018**

06:00 PM - 07:30 PM

07:30 PM - 08:30 PM

Lenten Soup Supper

Worship Service-*"Thy Will Be Done"*

Guild Room

Chapel

### **SUNDAY, MARCH 4, 2018**

### **3<sup>RD</sup> LENT**

### **WEDNESDAY, MARCH 7, 2018**

06:00 PM - 07:30 PM

07:30 PM - 08:30 PM

Lenten Soup Supper

Worship Service-*"Thy Will Be Done"*

Guild Room

Chapel

### **SUNDAY, MARCH 11, 2018**

03:00 PM - 06:00 PM

### **4<sup>TH</sup> LENT**

AKA presents

*Black History Program*

Sanctuary

### **WEDNESDAY, MARCH 14, 2018**

06:00 PM - 07:30 PM

07:30 PM - 08:30 PM

Lenten Soup Supper

Worship Service-*"Thy Will Be Done"*

Guild Room

Chapel

# CRESCENT CONNECTIONS

Crescent Avenue Presbyterian Church

Lent/Easter 2018

## COMING UP @ CACP

### **SUNDAY, MARCH 18, 2018**

03:00 PM - 04:30 PM

### **5<sup>TH</sup> LENT**

Crescent Concerts presents

### ***Festival of Organists***

Sanctuary

### **WEDNESDAY, MARCH 21, 2018**

06:00 PM - 07:30 PM

07:30 PM - 08:30 PM

Lenten Soup Supper

Worship Service-*"Thy Will Be Done"*

Guild Room

Chapel

### **SUNDAY, MARCH 25, 2018**

09:30 AM – 10:15 AM

### **PALM SUNDAY**

Holy Week Journey

Guild & Assembly Rooms

### **THURSDAY, MARCH 29, 2018**

05:00 PM – 07:30 PM

07:30 PM – 08:30 PM

08:30 PM – 09:00 PM

### **MAUNDY THURSDAY**

Lighted Labyrinth

Maundy Thursday Communion Worship

Lighted Labyrinth

Assembly Room

Sanctuary

Assembly Room

### **FRIDAY, MARCH 29, 2018**

05:00 PM – 07:30 PM

07:30 PM – 08:30 PM

08:30 PM – 09:00 PM

### **GOOD FRIDAY**

Lighted Labyrinth

Tenebrae Worship

Lighted Labyrinth

Assembly Room

Sanctuary

Assembly Room

### **SUNDAY, APRIL 1, 2018**

10:30 AM – 11:30 AM

12:00 PM – 12:30 PM

### **EASTER SUNDAY**

Easter Communion Worship

Coffee Fellowship

Sanctuary

Guild Room

### **SUNDAY, APRIL 22, 2018**

12:00 PM - 01:00 PM

Coffee & Conversation

Rev. McKey

Guild Room

### ***The Protestant Reformation (part 1)***

### **FRIDAY, APRIL 27, 2018**

5:00 PM - 08:00 PM

Game Night

Guild Room

### **SUNDAY, MAY 6, 2018**

12:00 PM - 01:00 PM

Coffee & Conversation

Rev. McKey

Guild Room

### ***The Protestant Reformation (part 2)***

## Crescent Avenue Presbyterian Church presents...



The season of Lent is a holy season of preparation, of reflecting on where we are in our spiritual journey and planting the seeds in our lives for change. It is a process of opening ourselves up to the work of the Holy Spirit to renew, transform and be refashioned in His image, open to the Potter's hand. This season, here at CAPC, there are a number of resources and opportunities listed below for you to consider. Our prayer is that your journey will lead you closer to Christ.

## Worship

**Each Sunday we continue to worship at 10:30 am in the Sanctuary.**

**Following the lectionary, we will journey through this Holy Season the season using music, prayer and sermons.**

**February 14 - Ash Wednesday 7:30 pm - Worship in Sanctuary.**

**Gather for a simple meal of Soup/Bread in the Guild Room** beginning at 6:00 pm.

This evening begins the series 'Thy Will be Done'

**Wednesdays, February 21, 28; March 7, 14, 21 -**

**Worship at 7:30 pm, Chapel**

'Thy Will be Done' continues.

Weekly meal of soup/bread served in the Guild Room (begins at 6:00 pm).

**March 25 - Palm Sunday –**

Sanctuary, 10:30 am, palms wave as we celebrate Jesus' arrival in Jerusalem and into our hearts!

**March 29 - Maundy Thursday -**

Sanctuary, 7:30 pm - service including stripping of the chancel.

A powerful service that begins the deepest reflections of the sacrifice our Savior offered for our salvation. Communion is served.

Service followed by lighted labyrinth in the Assembly Room (self-guided reflection on the seven last words of Christ).

## Crescent Avenue Presbyterian Church presents...



### March 30 - Good Friday -

**Tenebrae Service** - 7:30 pm Sanctuary -

A moving service that brings us face to face with the texts of the story of the Passion.

Readings, music, silence, candlelight and darkness all witness to the power of this night.

Service followed by lighted labyrinth in the Assembly Room (self-guided reflection on the seven last words of Christ).

## Study

**Each Sunday morning, 9 am** beginning February 11 -

**Soul Keeping: Caring for the Most Important Part of You** by John Ortberg -

Discover what this mysterious thing is that is called 'soul' and how to tend it to keep it whole.

**Holy Solitude: Lenten Reflections with Saints, Hermits, Prophets and Rebels** by Heidi

Haverkamp – Through inspiring stories, thoughtful daily reflections and practical spiritual disciplines we discover how time apart can open our eyes, ears, minds and hearts to the still, small voice of God and transform us for a life of faith and service.

**Devotionals Provided:** (free and available at church);

**Psalms for Lent: Devotions for the Sacred Season** by Jane Wilke;

**Thy Will be Done** by Ted Schroeder

# CRESCENT CONNECTIONS

Crescent Avenue Presbyterian Church

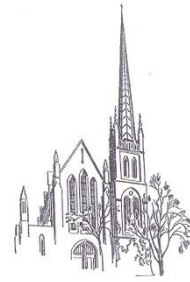
Lent/Easter 2018

## Crescent Avenue Presbyterian Church

716 Watchung Avenue, Plainfield, NJ 07060

phone: 908-756-2468 fax: 908-756-3158

[www.crescentonline.org](http://www.crescentonline.org)



## 2018 Leadership

### Class of 2018

Pat Baker  
Glen Crane  
Janice Haer  
Janna Peterson

#### Clerk of Session:

#### Buildings & Grounds:

#### Finance & Stewardship:

#### Membership & Evangelism:

#### Mission & Outreach:

#### Nominating:

#### Christian Education & Nurture:

#### Personnel & Administration:

#### Worship, Music & Arts:

Emily Upton

Nick Stevens; Henry Ward

Kathy Mann,

BJ Snyder, Janna Peterson

Pat Fleming; Leslie Fagan

Janice Haer; Laura Mann

Janice Haer; Pat Baker

Stephanie DeGeneste

Joan Pivnichny; Pat Baker,

Joan Pivnichny;

### ELDERS

#### Class of 2019

Pat Fleming  
Laura Mann  
Nicholas Stevens  
Henry Ward

Janet Ramsey, Ella Sawyer

Joan Pivnichny; Nick Stevens, BJ Snyder, Gary Mann, Julie Downing

Julie Downing, Janice Haer, Gerry Harvey, Andre McIntyre, Deidra

McIntyre, Edwin Opoku, Laura Villanueva,

Sam Diony, Noelle Perrine, BJ Snyder, Thylene Torres

Drude Crane, Dominique Stevens

Jacque Archer-Kennedy, Betsy Herman, Chrystal McArthur, Deidra

McIntyre, Liz McNish, Sally Nkellefack.

Glen Crane, Nick Stevens

Drude Crane, Jeff Downing, Henry Manu, Jacque Archer-Kennedy

#### Class of 2020

Leslie Fagan  
Kathy Mann  
BJ Snyder  
Joan Van Pelt-Pivnichny

### Class of 2018

Julie Downing (Co-Moderator)  
Henry Manu  
Deidra McIntyre (Secretary)  
Dominique Stevens (Co-Moderator)

### DEACONS

#### Class of 2019

Samuel Diony  
Justine Fofie  
Sally Nkellefack  
Katherine West-Aaron

#### Class of 2020

Jacque Archer-Kennedy  
Edwin Opoku  
Noelle Perrine  
Thylene Torres

**Flowers:** Thylene Torres, Jacque Archer-Kennedy, Dominique Stevens

**Card ministry:** Katherine West-Aaron, Thylene Torres, Edwin Opoku

**Communion:** Katherine West-Aaron

**Shutterfly Link:** Jacque Archer-Kennedy, Deidra McIntyre

### STAFF

Rev. Lynn Santulli  
Dr. Deborah S. King  
Ronald Maltby  
Stephanie DeGeneste  
Ruth Mikalonis

Pastor  
Interim Director of Music  
Sexton  
Children's Ministry Director  
Church Administrator

lsantulli67@gmail.com  
crescent@deborahsking.com  
smdeg7@juno.com  
admin@crescentonline.org

### VOLUNTEER STAFF

Gary Mann  
Joan Pivnichny

Bookkeeper  
Treasurer

gj.mann@verizon.net  
jdvanpelt@gmail.com



## CRESCENT CONNECTIONS

Crescent Avenue Presbyterian Church

Lent/Easter 2018

It is the tradition at Easter time to decorate the sanctuary chancel with lilies, hyacinths and other traditional Easter flowers.

For those who wish to honor or memorialize loved ones by dedicating these flowers, please place a check in any amount with this form in the offering plate, or return to office, no later than **Tuesday, March 27.**

Following the Easter service, you may take your plant(s) with you, or the Deacons will distribute the flowers to those members and friends of the congregation who are homebound or ill.

If you are in church before then, you can use the “postcard” insert to order, or use the online order form on the home page of the church website.

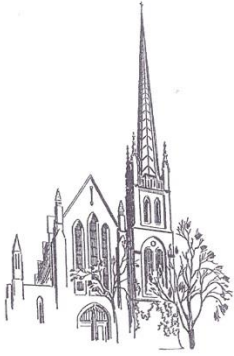


## *Join us for Easter Morning Resurrection Worship*



*Sunday, April 1, 2018 @ 10:15 a.m.*





**Crescent Ave  
Presbyterian  
Church**

716 Watchung Ave  
Plainfield, NJ 07060

**CRESCENT CONNECTIONS  
LENT/EASTER 2018**



**Lent/Easter 2018**

